



GLOUCESTER TERRACE, LONDON W2

£2,350 PCM



STUNNING 1 BEDROOM APARTMENT - BAYSWATER **W2**

PROPERTY REFERENCE CODE: RL1363

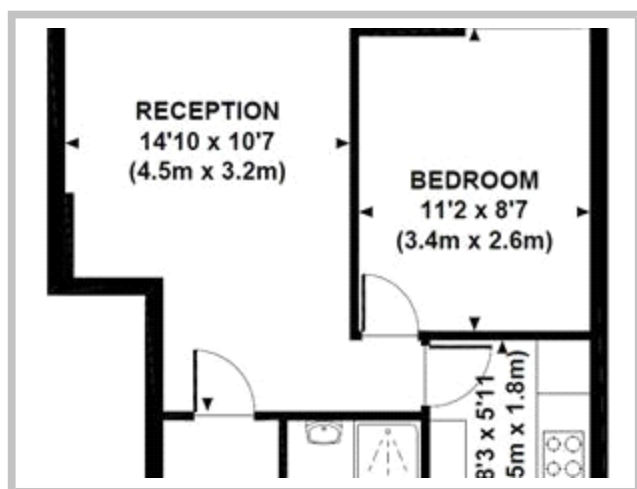
GLOUCESTER TERRACE, LONDON W2

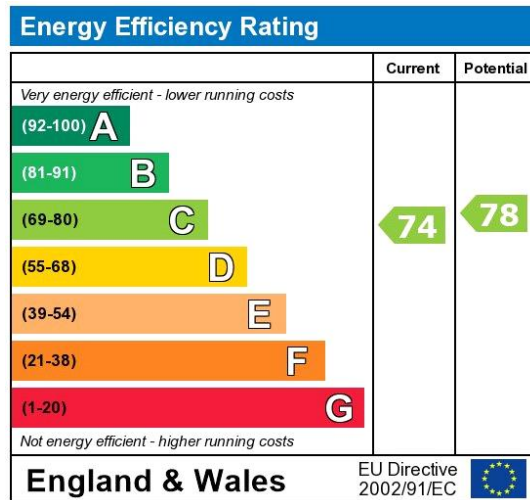
Ideally located on in a stunning period building on the sought-after Gloucester Terrace this fantastic 1 bedroom flat boasts bright and spacious accommodation throughout.

- FANTASTIC 1 BEDROOM FLAT IN ENVIABLE LOCATION
- STUNNING PERIOD BUILDING ON THE SOUGHT-AFTER TERRACE
- GENEROUS RECEPTION ROOM WITH MODERN SEMI OPEN-PLAN KITCHEN
- BEDROOM AND SMART BATHROOM
- CENTRALLY LOCATED FOR SHOPS AND TRANSPORT

Ideally located on in a stunning period building on the sought-after Gloucester Terrace this fantastic 1 bedroom flat boasts bright and spacious accommodation throughout.





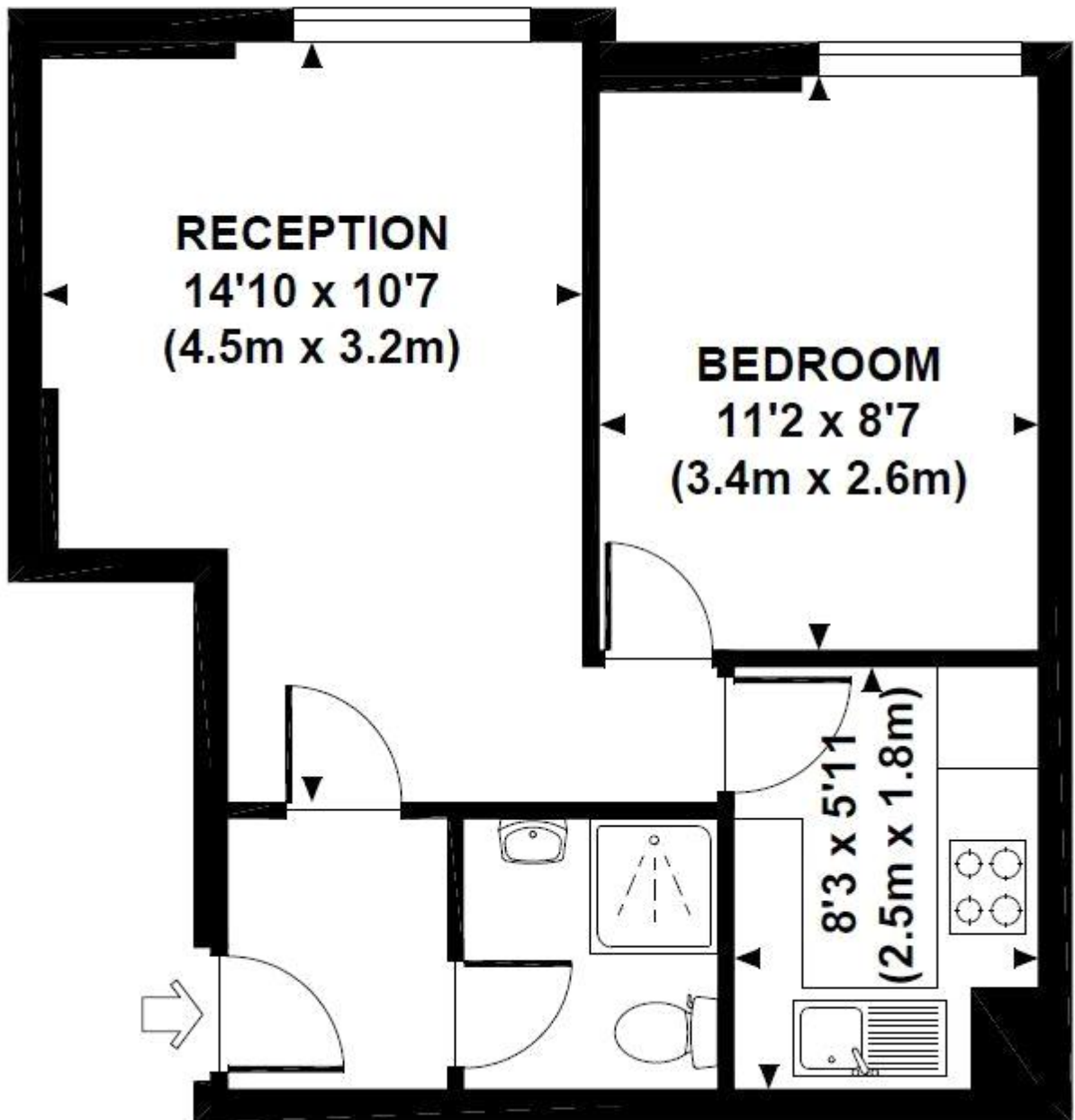


The energy efficiency rating is a measure of the overall efficiency of a home. The higher the rating the more energy efficient the home is and the lower the fuel bills will be.

Whilst every effort is made to ensure the accuracy of these details, it should be noted that the measurements are approximate only. Floorplans are for representation purposes only and prepared according to the RICS Code of Measuring Practice by our floorplan provider. Therefore, the layout of doors, windows and rooms are approximate and should be regarded as such by any prospective tenant.

FORBES HOUSE

Approximate Gross Internal Area 350 sq ft / 32.5 sq m



Viewing by appointment only
Maison Chase - Maison Chase
41A Mill Lane, West Hampstead, London NW6 1NB
Tel: 020 3951 7464
Email: home@maisonchase.co.uk
Website: www.maisonchase.co.uk

