



**HERTFORD STREET, MAYFAIR, LONDON W1J**

**£4,000 PCM**



**STYLISH MAYFAIR RESIDENCE WITH CONCIERGE &  
LIFT MOMENTS FROM HYDE PARK**

**PROPERTY REFERENCE CODE: RL1350**



## **HERTFORD STREET, MAYFAIR, LONDON W1J**

Stylish and spacious two-bedroom, two-bathroom apartment in a prestigious portered building with lift access, ideally located in the heart of Mayfair. Recently refurbished with new flooring and fresh décor, featuring a bright reception room and separate kitchen. Just moments from Hyde Park.

- BEAUTIFULLY PRESENTED TWO BEDROOM APARTMENT
- NEWLY PAINTED WITH TIMELESS COLOUR
- 24-HOUR PORTER SERVICE
- NEWLY FITTED PLUSH CARPET THROUGHOUT
- ENVIABLE LOCATION IN MAYFAIR
- SPACIOUS AND BRIGHT LIVING ROOM
- SEPARATE KITCHEN WITH W/D & DISHWASHER
- LARGE MASTER BEDROOM WITH FITTED WARDROBES
- TWO BATHROOMS (1 EN-SUITE)
- SECOND DOUBLE BEDROOM WITH FITTED WARDROBE
- LIFT ACCESS
- CENTRALLY LOCATED FOR SHOPS AND TRANSPORT

An elegant and generously proportioned two-bedroom, two-bathroom apartment set within a prestigious 24-hour portered building with lift access, ideally positioned in the heart of Mayfair.

This beautifully presented residence boasts a bright and spacious reception room, a separate fully fitted kitchen, and has been recently enhanced with brand-new flooring and fresh paint throughout—offering a stylish and contemporary living environment.

Perfectly located on Hertford Street, just moments from the open green spaces of Hyde Park, the apartment is surrounded by a wealth of independent boutiques, fine dining establishments, and world-class shopping on Oxford Street and the West End, all within easy walking distance.

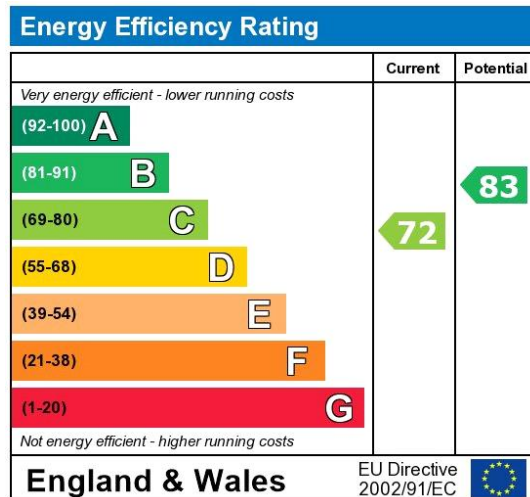
Council Tax Band: G







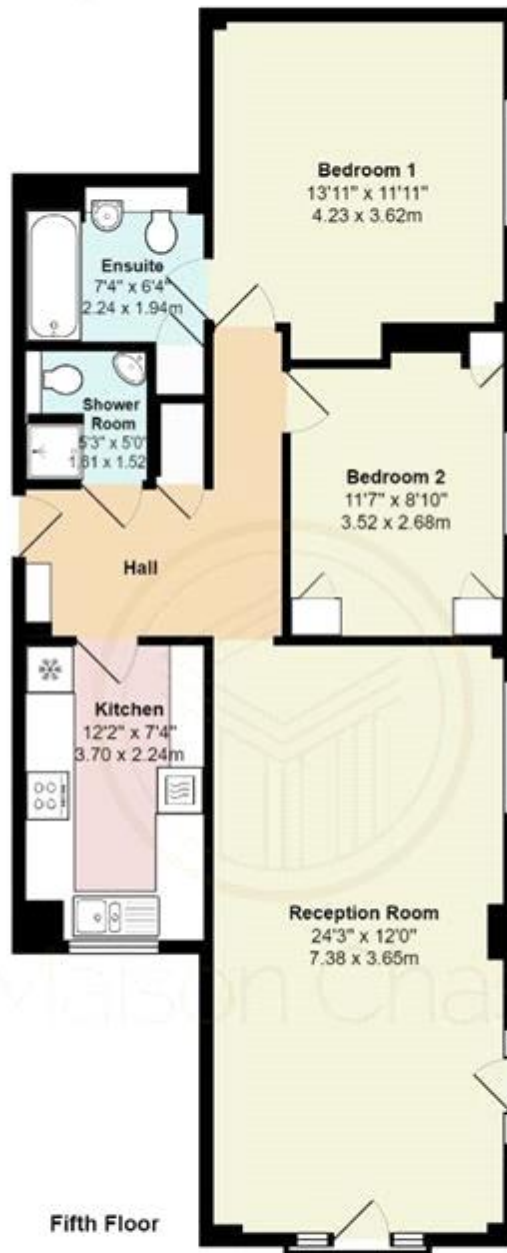




The energy efficiency rating is a measure of the overall efficiency of a home. The higher the rating the more energy efficient the home is and the lower the fuel bills will be.

Whilst every effort is made to ensure the accuracy of these details, it should be noted that the measurements are approximate only. Floorplans are for representation purposes only and prepared according to the RICS Code of Measuring Practice by our floorplan provider. Therefore, the layout of doors, windows and rooms are approximate and should be regarded as such by any prospective tenant.





Carrington House W1J

Total Area: 841 ft<sup>2</sup> ... 78.1 m<sup>2</sup>

All measurements are approximate and for display purposes only

Viewing by appointment only

Maison Chase - Maison Chase

41A Mill Lane, West Hampstead, London NW6 1NB

Tel: 020 3951 7464

Email: [home@maisonchase.co.uk](mailto:home@maisonchase.co.uk)

Website: [www.maisonchase.co.uk](http://www.maisonchase.co.uk)



Maison Chase