



Maison Chase

**FINCHLEY ROAD, ST JOHN'S WOOD, LONDON NW8**

**£1,350 PW**



**A SPACIOUS FOUR DOUBLE BEDROOM APARTMENT**  
**NW8**

PROPERTY REFERENCE CODE: RL1316

## **FINCHLEY ROAD, ST JOHN'S WOOD, LONDON NW8**

This beautiful and spacious 4 bedroom apartment is arranged over one floor of an elegant House conversion while boasting a large reception room, two bathrooms and spacious kitchen.

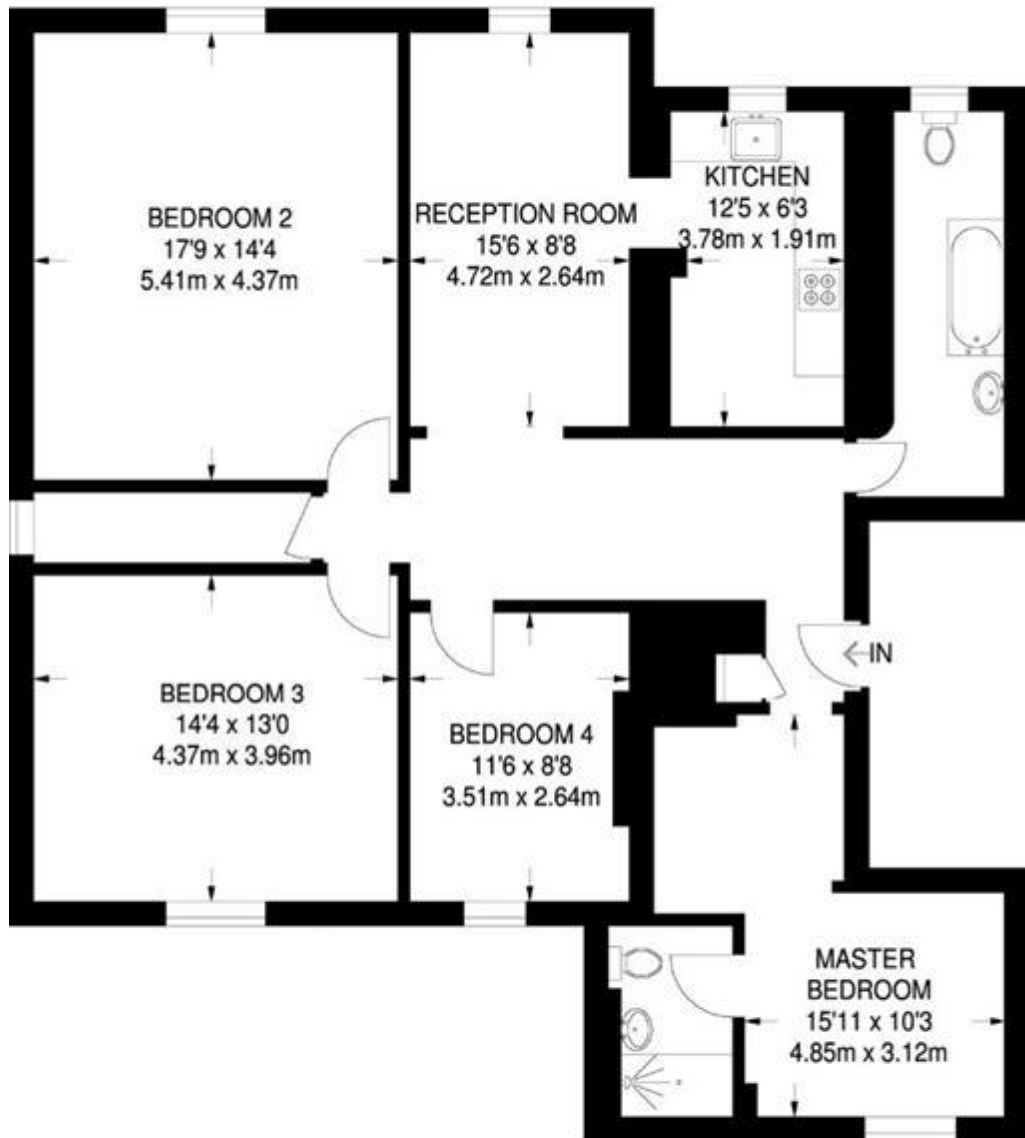
- 4 DOUBLE BEDROOM DUPLEX FLAT
- AMAZING LOCATION
- CLOSE TO TRANSPORT AND SHOPPING FACILITIES
- MASTER BEDROOM WITH AN EN SUITE BATHROOM
- SUITABLE FOR STUDENTS AND PROFESSIONALS

Comprising good size reception room, a master bedroom with en-suite, further three large bedrooms and a family bathroom. The property is located on Finchley Road, a short walk from St John's Wood Tube Station and other forms of public transport.





Whilst every effort is made to ensure the accuracy of these details, it should be noted that the measurements are approximate only. Floorplans are for representation purposes only and prepared according to the RICS Code of Measuring Practice by our floorplan provider. Therefore, the layout of doors, windows and rooms are approximate and should be regarded as such by any prospective tenant.



**FIRST FLOOR**  
**1316 SQ FT / 122.3 SQ M**

Viewing by appointment only  
Maison Chase - Maison Chase  
41A Mill Lane, West Hampstead, London NW6 1NB  
Tel: 020 3951 7464  
Email: [home@maisonchase.co.uk](mailto:home@maisonchase.co.uk)  
Website: [www.maisonchase.co.uk](http://www.maisonchase.co.uk)

