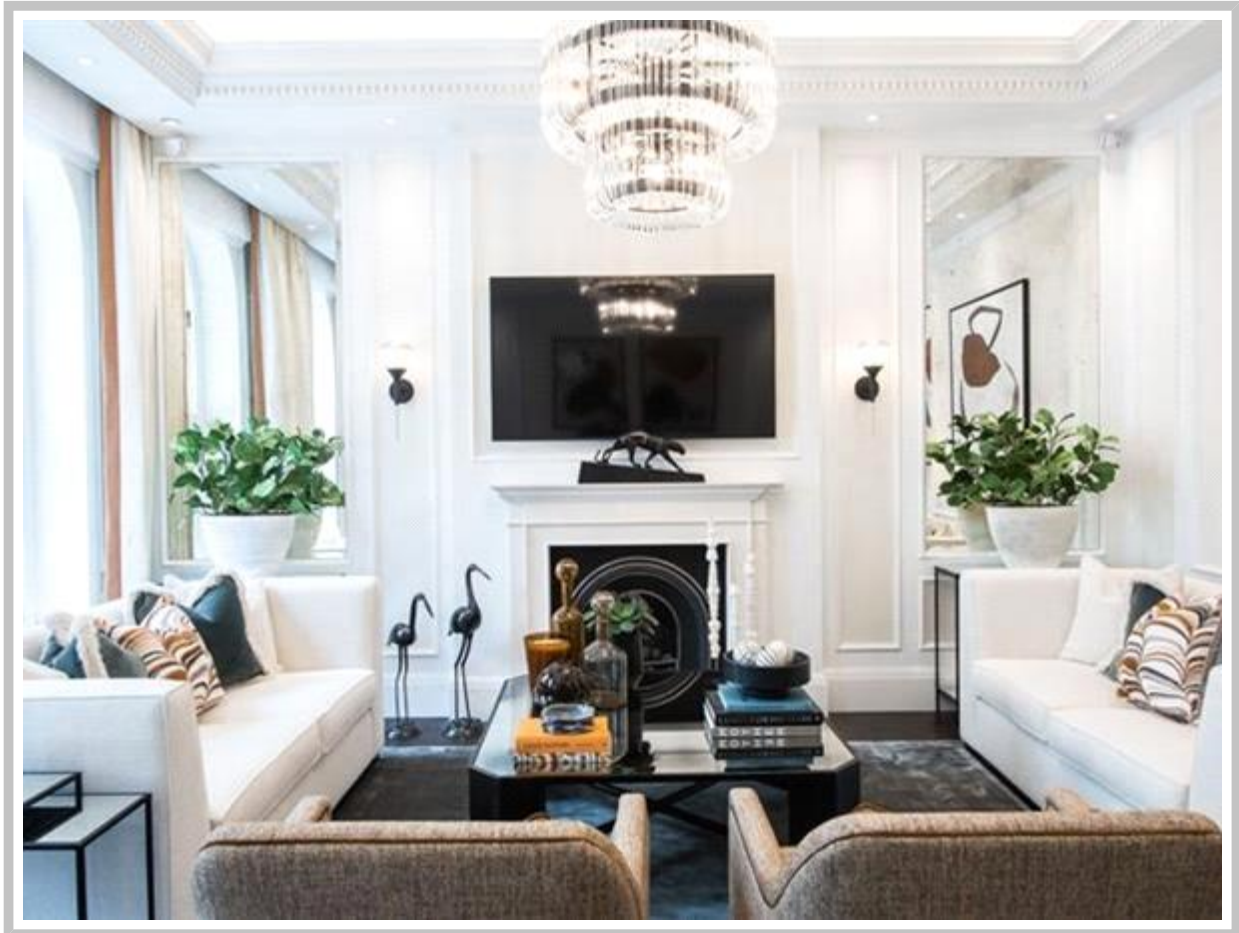




Maison Chaise

KENSINGTON CHURCH STREET, LONDON

£3,000 PW



GORGEOUS 2 BEDROOM APARTMENT IN
KENSINGTON

PROPERTY REFERENCE CODE: RL1288

KENSINGTON CHURCH STREET, LONDON

Stunning, high ceiling two bedroom, two bathroom apartment. Kitchen worktops comprised of tuscan calacatta marble, hand-built kitchen units, state of the art Miele oven, induction hob and more, this beautiful apartment located in the heart of Kensington is a must see!

- STUNNING, HIGH CEILING TWO BEDROOM APARTMENT
- FULLY-FITTED AND HAND-BUILT MODERN KITCHEN
- TUSCAN CALACATTA MARBLE WORKTOPS
- INTEGRATED MIELE OVEN
- JULIET BALCONY OVERLOOKING HYDE PARK
- INDUCTION HOB

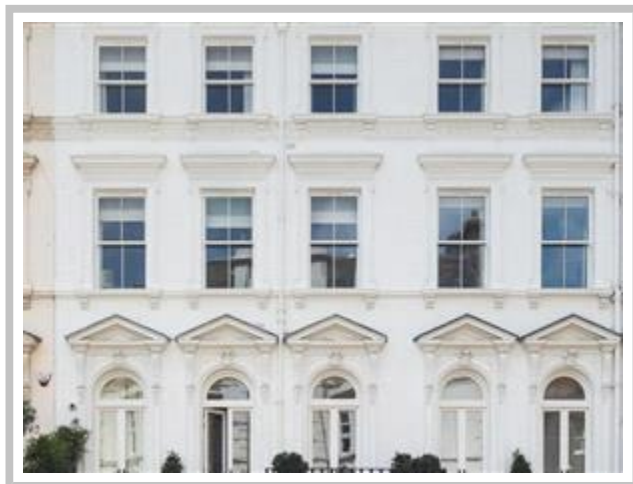
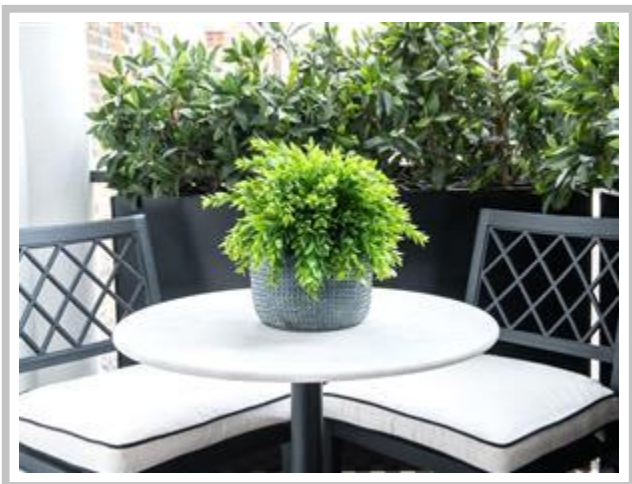
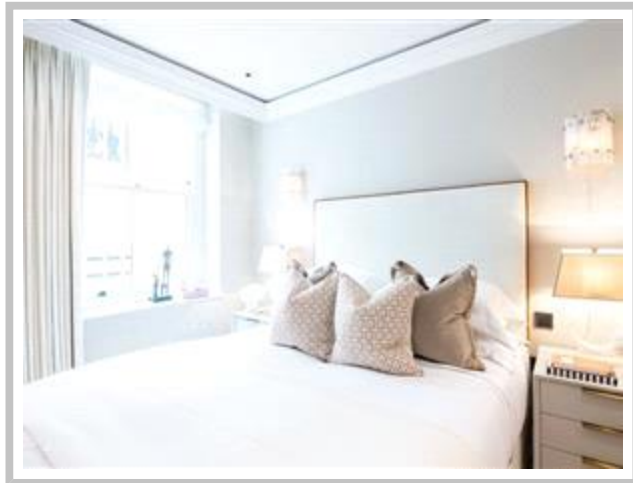
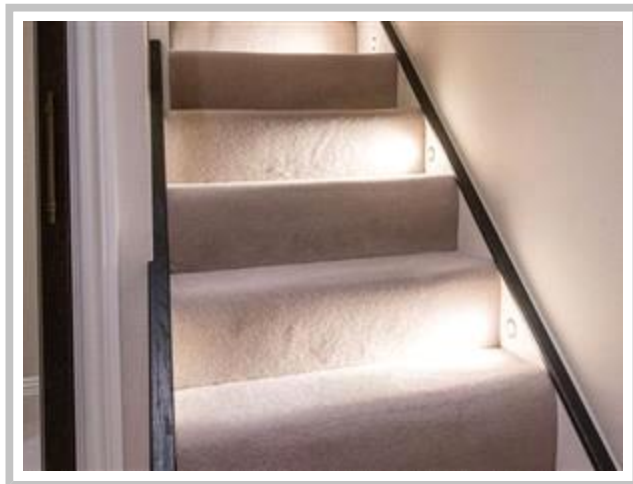
Stunning, high ceiling two bedroom, two bathroom apartment. Kitchen worktops comprised of tuscan calacatta marble, hand-built kitchen units, state of the art Miele oven, induction hob and more, this beautiful apartment located in the heart of Kensington is a must see!

The master bedroom has large built-in wardrobes, an en-suite bathroom with underfloor heating for the cold winter, mirror-fronted cabinet units with integrated demister and double doors leading you onto a lovely juliet balcony.

The second bedroom also has an en-suite bathroom with underflood heating and mirror-fronted cabinet units with an integrated demister.

Council Tax Band: G





Whilst every effort is made to ensure the accuracy of these details, it should be noted that the measurements are approximate only. Floorplans are for representation purposes only and prepared according to the RICS Code of Measuring Practice by our floorplan provider. Therefore, the layout of doors, windows and rooms are approximate and should be regarded as such by any prospective tenant.

Key :-

W - Wardrobe
JB - Juliette Balcony



COURT YARD LEVEL



GROUND FLOOR

APPROX. GROSS INTERNAL AREA*
1035 Ft² - 96.15 M²

Viewing by appointment only
Maison Chase - Maison Chase
41A Mill Lane, West Hampstead, London NW6 1NB
Tel: 020 3951 7464
Email: home@maisonchase.co.uk
Website: www.maisonchase.co.uk

