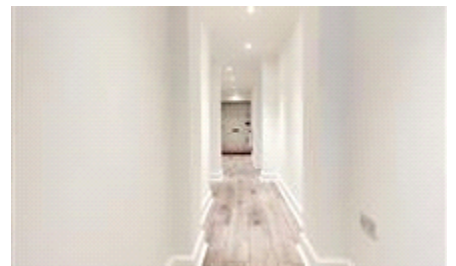
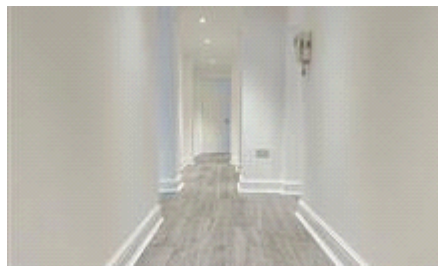
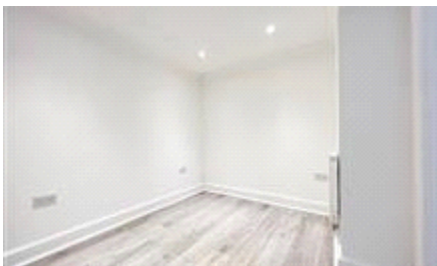




Maison Chase




Gloucester Place,
Marylebone, London
W1U
£950 pw

This spacious, well-presented, and newly painted 3 bedroom maisonette is beautifully arranged throughout, inclusive of Heating and Hot Water, great size lounge with separate study/office space, a separate kitchen, brand-new light grey wood flooring, 2 fully tiled bathrooms, and a guest WC.

- Spacious 3 double bedroom maisonette
- Highly sought-after block
- Ample storage throughout
- Two bathrooms and a guest WC
- Separate fully fitted kitchen
- Separate study/office space
- Close to both Regent's Park and Baker Street
- Walking distance to fashionable shops of

Energy Efficiency Rating

	Current	Potential
<i>Very energy efficient - lower running costs</i> (92-100) A		
(81-91) B		
(69-80) C	74	78
(55-68) D		
(39-54) E		
(21-38) F		
(1-20) G <i>Not energy efficient - higher running costs</i>		
England & Wales	EU Directive 2002/91/EC	

The energy efficiency rating is a measure of the overall efficiency of a home. The higher the rating the more energy efficient the home is and the lower the fuel bills will be.

Viewing	Strictly by appointment with Maison Chase - Maison Chase Telephone 020 3951 7464
Reference	RL1259
Additional Information	Council Tax Band: E

Whilst every effort is made to ensure the accuracy of these details, it should be noted that the measurements are approximate only. Floorplans are for representation purposes only and prepared according to the RICS Code of Measuring Practice by our floorplan provider. Therefore, the layout of doors, windows and rooms are approximate and should be regarded as such by any prospective tenant.