



HIGH ROAD, NORTH FINCHLEY, LONDON N12

£1,375 PCM



MUST SEE 1 BEDROOM NORTH FINCHLEY N12

PROPERTY REFERENCE CODE: RL1086

HIGH ROAD, NORTH FINCHLEY, LONDON N12

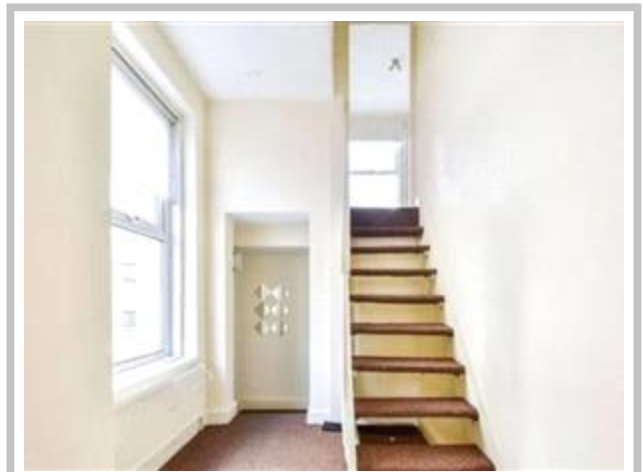
This large one bedroom apartment located conveniently on North Finchley High Road benefits from a modern kitchen and bathroom, spacious reception area with stairs leading to double bedroom.

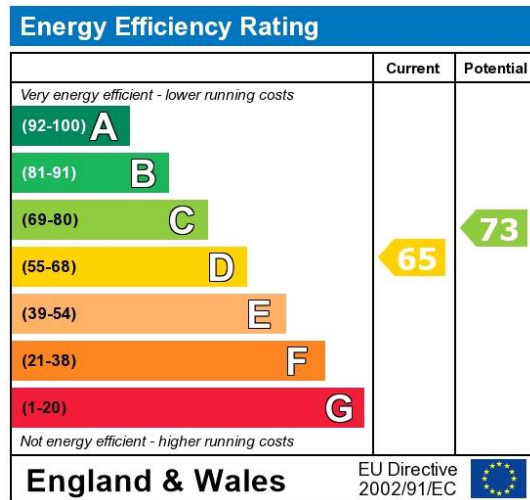
A viewing is highly recommended.

- A SUPERB 1 BEDROOM FLAT
- AMAZING LOCAL AMENITIES AND TRANSPORT LINKS
- FITTED KITCHEN
- TILED BATHROOM
- EXCELLENT LIVING SPACE THROUGHOUT

This large one bedroom apartment located conveniently on North Finchley High Road benefits from a modern kitchen and bathroom, spacious reception area with stairs leading to double bedroom.

A viewing is highly recommended.





The energy efficiency rating is a measure of the overall efficiency of a home. The higher the rating the more energy efficient the home is and the lower the fuel bills will be.

Whilst every effort is made to ensure the accuracy of these details, it should be noted that the measurements are approximate only. Floorplans are for representation purposes only and prepared according to the RICS Code of Measuring Practice by our floorplan provider. Therefore, the layout of doors, windows and rooms are approximate and should be regarded as such by any prospective tenant.



APPROXIMATE GROSS INTERNAL AREA
497 SQ FT / 46.2 SQ M

Viewing by appointment only
Maison Chase - Maison Chase
41A Mill Lane, West Hampstead, London NW6 1NB
Tel: 020 3951 7464
Email: home@maisonchase.co.uk
Website: www.maisonchase.co.uk

