



HAWKRIDGE CLOSE, CHADWELL HEATH, ROMFORD RM6

£1,450 PCM



PROPERTY REFERENCE CODE: RL1198

HAWKRIDGE CLOSE, CHADWELL HEATH, ROMFORD RM6

A stunning and spacious two double bedroom maisonette with a communal garden, situated in a quiet cul-de-sac, within a quarter of a mile of Chadwell Heath.

- SPACIOUS 2 BEDROOM MAISONETTE
- IMMACULATE FULLY FITTED KITCHEN
- LOVELY COMMUNAL GARDEN
- MODERN BATHROOM
- DOUBLE GLAZING WINDOWS
- QUIET LOCATION WITHIN SHORT WALK TO TRANSPORT AND SHOPPING

This home has been tastefully refurbished, offering an amazing living space throughout, great for entertaining, an abundance of light, an open-plan fully fitted kitchen, and a modern bathroom.

This home will suite perfect a professional couple.

Dimensions (approx.):

Lounge area: 13' 8' x 13' 4' (4.17m x 4.06m)

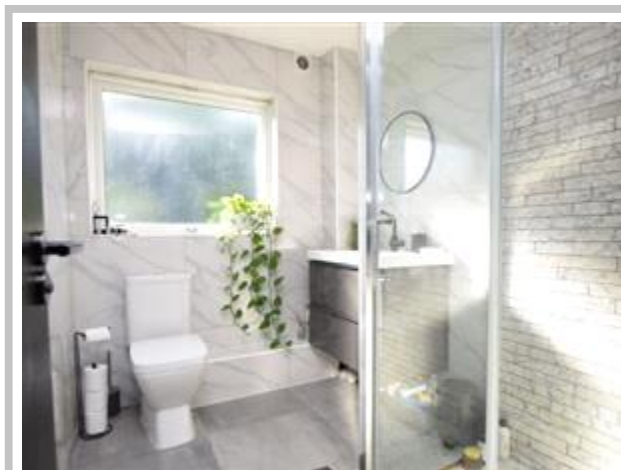
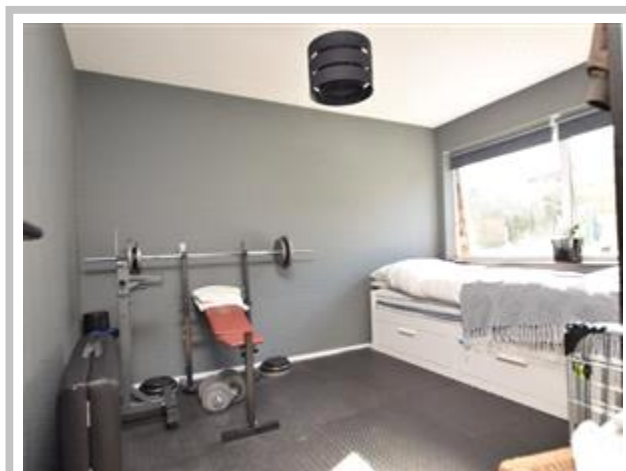
Kitchen: 9' 11' x 7' 11' (3.02m x 2.41m)

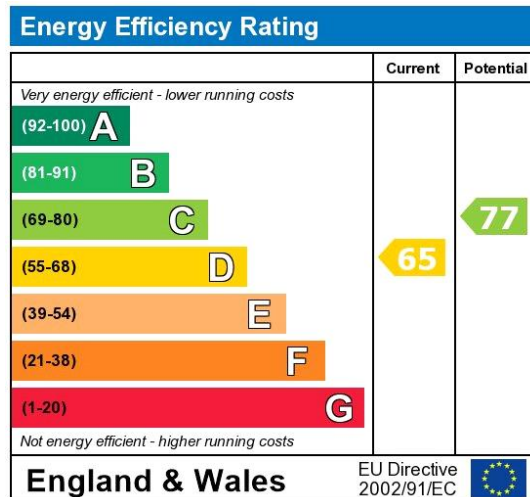
Bedroom One: 13' 5' x 10' 6' (4.09m x 3.20m)

Bedroom Two: 10' 11' x 10' 3' (3.33m x 3.12m)

Please call or email us for the viewing arrangements.

Council Tax Band: C





The energy efficiency rating is a measure of the overall efficiency of a home. The higher the rating the more energy efficient the home is and the lower the fuel bills will be.

Whilst every effort is made to ensure the accuracy of these details, it should be noted that the measurements are approximate only. Floorplans are for representation purposes only and prepared according to the RICS Code of Measuring Practice by our floorplan provider. Therefore, the layout of doors, windows and rooms are approximate and should be regarded as such by any prospective tenant.

Viewing by appointment only
Maison Chase - Maison Chase
41A Mill Lane, West Hampstead, London NW6 1NB
Tel: 020 3951 7464
Email: home@maisonchase.co.uk
Website: www.maisonchase.co.uk

