



**WARREN COURT, EUSTON ROAD, LONDON NW1**

**£550 PW**



**THE BEST FLAT IN WARREN ST**

**PROPERTY REFERENCE CODE: RL0526**

## **WARREN COURT, EUSTON ROAD, LONDON NW1**

This studio apartment is located above Warren Street Station and has a lift for easy access.

With a massive reception, fully fitted kitchen, bathroom and walking distance to UCL or Tottenham Court Road, this property is ideal for anyone wanting the perfect flat.

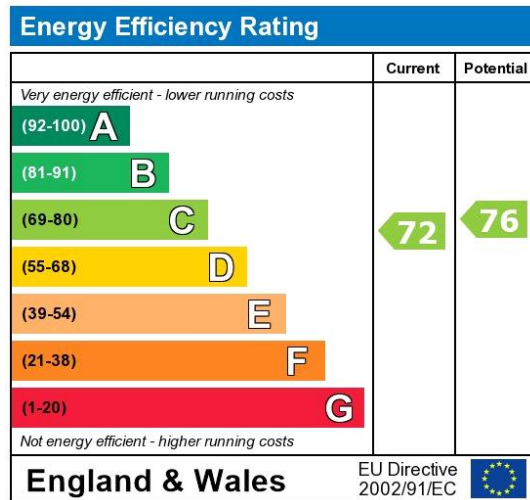
- GORGEOUS 1 BEDROOM FLAT
- HUGE RECEPTION ROOM
- CONTEMPORARY BATHROOM
- WASHING MACHINE INCLUDED
- GREAT STORAGE SPACE
- BEAUTIFUL FITTED & TILED KITCHEN
- WARREN ST LOCATION
- MASSIVE VARIETY OF LOCAL STORES AND TRANSPORT LINKS NEARBY

This studio apartment is located above Warren Street Station and has a lift for easy access.

With a massive reception, fully fitted kitchen, bathroom and walking distance to UCL or Tottenham Court Road, this property is ideal for anyone wanting the perfect flat.

Council Tax Band: D

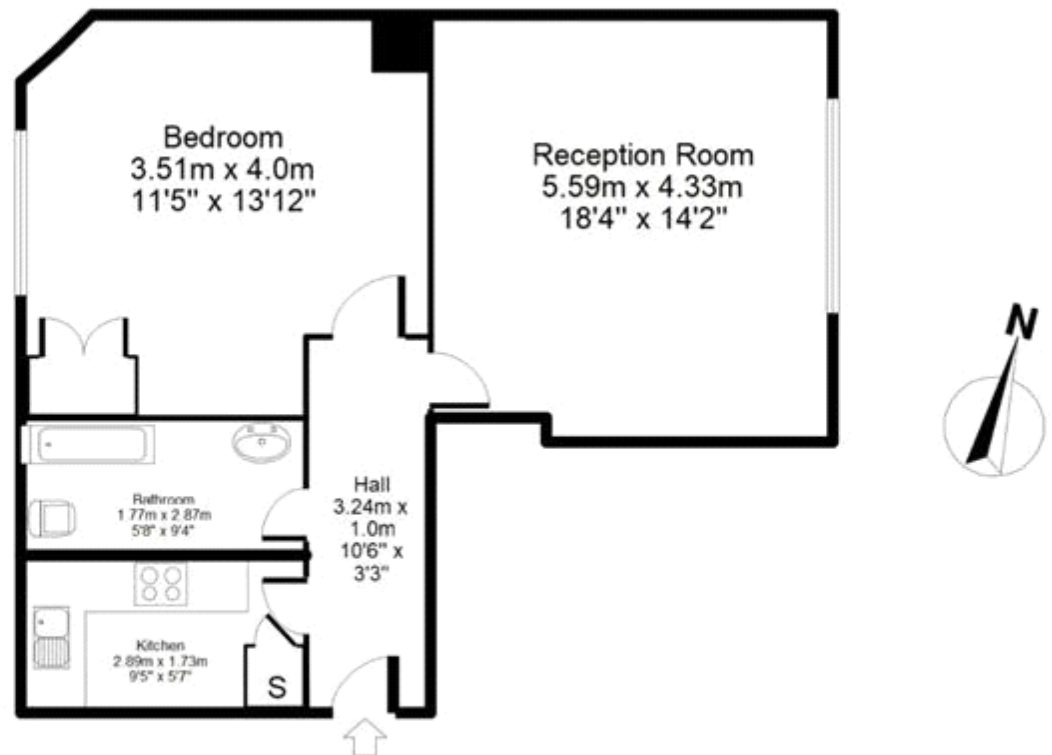




The energy efficiency rating is a measure of the overall efficiency of a home. The higher the rating the more energy efficient the home is and the lower the fuel bills will be.

Whilst every effort is made to ensure the accuracy of these details, it should be noted that the measurements are approximate only. Floorplans are for representation purposes only and prepared according to the RICS Code of Measuring Practice by our floorplan provider. Therefore, the layout of doors, windows and rooms are approximate and should be regarded as such by any prospective tenant.

5th Floor 1 Bedroom Apartment Fitzrovia London



Total approx internal floor area 51.56m<sup>2</sup> (555sq.ft).  
This floor plan is for illustrative purposes only and should be used only for this purpose by prospective applicants as it is not to scale.