



**ACHILLES ROAD, WEST HAMPSTEAD, LONDON NW6**

**£1,099 PW**



**MUST SEE 4/5 BED END-TERRACE HOUSE**

**PROPERTY REFERENCE CODE: RL1191**

## **ACHILLES ROAD, WEST HAMPSTEAD, LONDON NW6**

Stunning 4/5 Bedroom end-terraced house with 2 spacious & bright reception rooms, 2 immaculate contemporary bathrooms and a private garden.

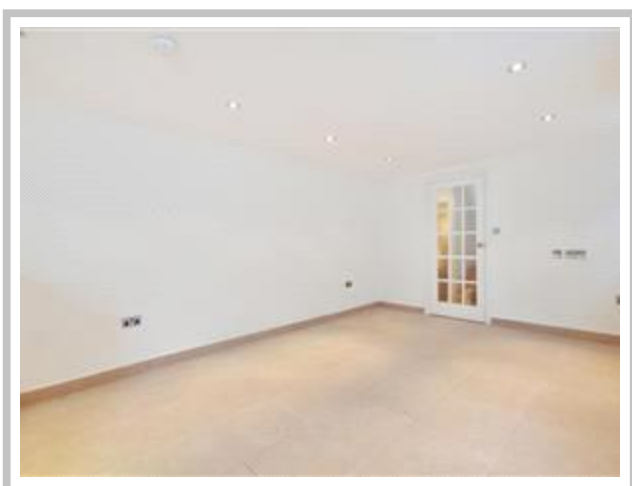
- 5 BEAUTIFUL BEDROOMS
- 2 LARGE RECEPTION ROOMS
- 2 CONTEMPORARY BATHROOMS
- MODERN FULLY-FITTED KITCHEN
- 1 LOVELY PRIVATE GARDEN

- GORGEOUS DÉCOR THROUGHOUT
- AMAZING LOCATION IN HEART OF WEST HAMPSTEAD
- VARIETY OF LOCAL SUPERMARKETS
- SWISS COTTAGE & FINCHLEY ROAD 10 MINUTES AWAY

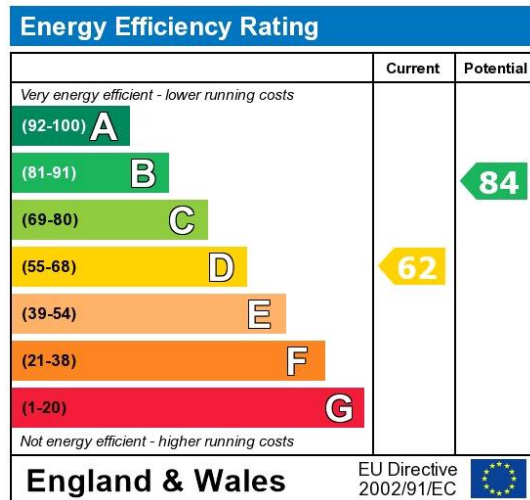
Stunning 4/5 Bedroom end-terraced house with 2 spacious & bright reception rooms, 2 immaculate contemporary bathrooms, fully-fitted kitchen and a private garden.

Located in West Hampstead on a quiet road.

Council Tax Band: G







The energy efficiency rating is a measure of the overall efficiency of a home. The higher the rating the more energy efficient the home is and the lower the fuel bills will be.

Whilst every effort is made to ensure the accuracy of these details, it should be noted that the measurements are approximate only. Floorplans are for representation purposes only and prepared according to the RICS Code of Measuring Practice by our floorplan provider. Therefore, the layout of doors, windows and rooms are approximate and should be regarded as such by any prospective tenant.



Viewing by appointment only  
 Maison Chase - Maison Chase  
 41A Mill Lane, West Hampstead, London NW6 1NB  
 Tel: 020 3951 7464  
 Email: [home@maisonchase.co.uk](mailto:home@maisonchase.co.uk)  
 Website: [www.maisonchase.co.uk](http://www.maisonchase.co.uk)

