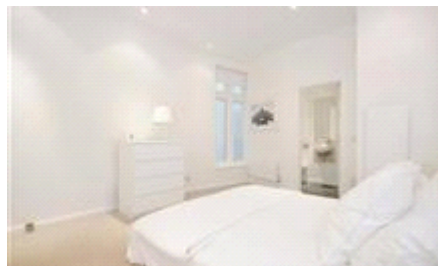




Maison Chase




Bingham Place,
Marylebone, London
W1U
£1,100 pw

A delightful 2 bed 2 bath split level apartment in a beautifully maintained period Mews property, providing stylish living in the heart of Marylebone.

The green spaces of Regents Park are just a short walk away, as are the eclectic shops and restaurants of London's West End.

- Impressive 2 bedroom mews apartment
- Inviting reception room with dining area
- 2 immaculate bathrooms (1 en-suite)
- Separate fully fitted kitchen
- High spec fixtures and fittings
- Envious location in Marylebone

Energy Efficiency Rating

	Current	Potential
<i>Very energy efficient - lower running costs</i> (92-100) A		
(81-91) B		
(69-80) C		76
(55-68) D	66	
(39-54) E		
(21-38) F		
(1-20) G		
<i>Not energy efficient - higher running costs</i>		
England & Wales	EU Directive 2002/91/EC	

The energy efficiency rating is a measure of the overall efficiency of a home. The higher the rating the more energy efficient the home is and the lower the fuel bills will be.

Viewing	Strictly by appointment with Maison Chase - Maison Chase Telephone
	020 3951 7464
Reference	RL1122
Additional Information	Council Tax Band: G

Whilst every effort is made to ensure the accuracy of these details, it should be noted that the measurements are approximate only. Floorplans are for representation purposes only and prepared according to the RICS Code of Measuring Practice by our floorplan provider. Therefore, the layout of doors, windows and rooms are approximate and should be regarded as such by any prospective tenant.