



**ABERDARE GARDENS, WEST HAMPSTEAD, LONDON NW6**

**£370 PW**



**STUNNING STUDIO FLAT - SOUTH HAMPSTEAD NW6**

**PROPERTY REFERENCE CODE: RL0876**

## **ABERDARE GARDENS, WEST HAMPSTEAD, LONDON NW6**

A rare opportunity to acquire this beautiful 1 bed studio with a gorgeous bathroom situated within a red brick period converted property, easily within reach of Finchley Road and West Hampstead.

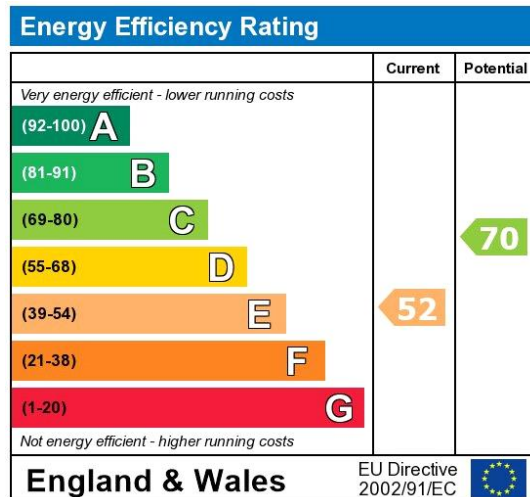
- A SUPERB 1 BEDROOM FLAT
- SET IN A PEACEFUL RESIDENTIAL ROAD
- STYLISH RECEPTION ROOM/DINING ROOM
- FEATURES MODERN KITCHEN WITH INTEGRATED APPLIANCES
- FINISHED BEAUTIFULLY THROUGHOUT
- BOASTS A GORGEOUS PATIO GARDEN
- MOMENTS FROM LOCAL SHOPS AND AMENITIES

The property boasts a spacious reception room with wood flooring and high ceilings, a spacious double bedroom, beautiful bathroom, and a fully fitted kitchen. Located on a quiet road, yet very close to transport and many amenities.

Council Tax Band: F



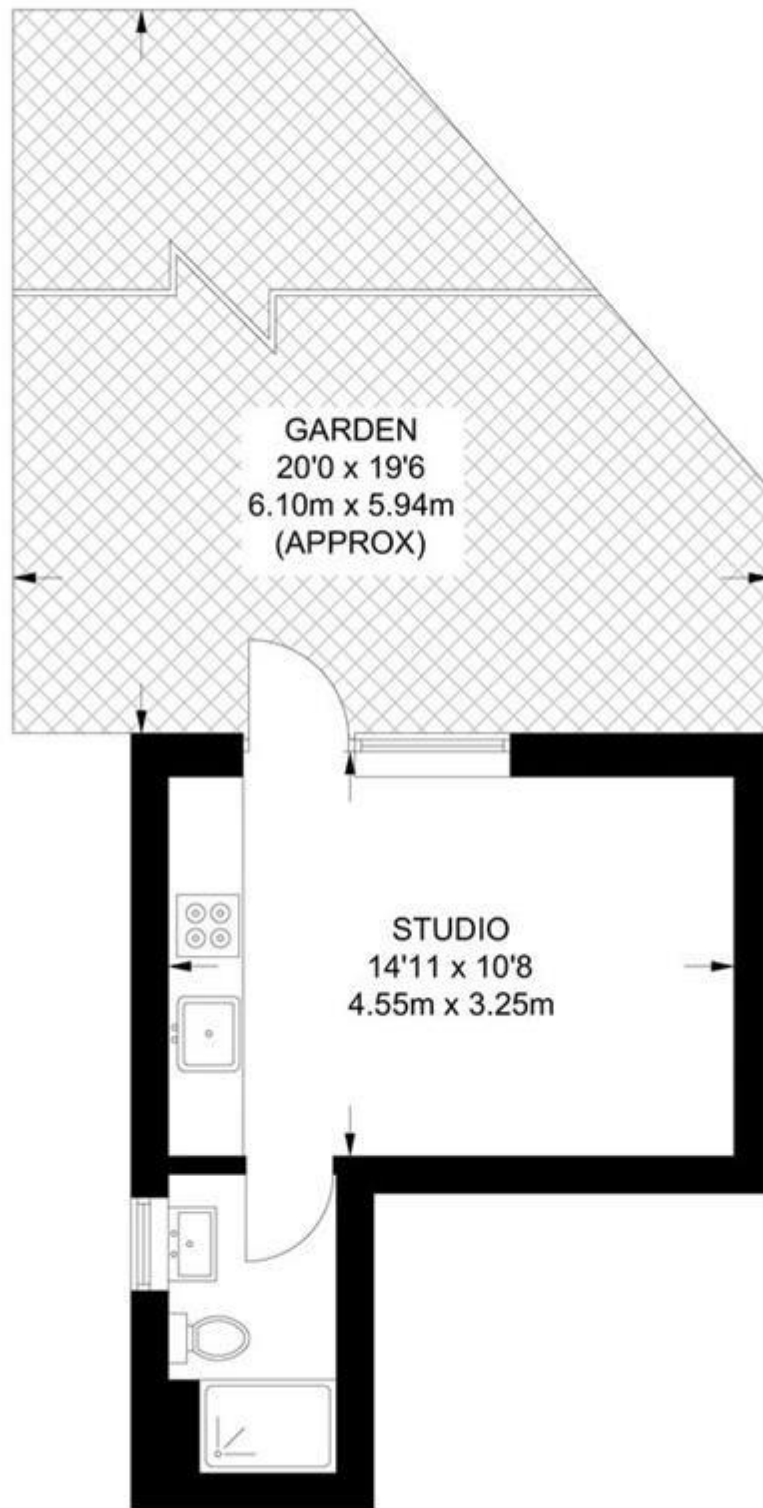




The energy efficiency rating is a measure of the overall efficiency of a home. The higher the rating the more energy efficient the home is and the lower the fuel bills will be.

Whilst every effort is made to ensure the accuracy of these details, it should be noted that the measurements are approximate only. Floorplans are for representation purposes only and prepared according to the RICS Code of Measuring Practice by our floorplan provider. Therefore, the layout of doors, windows and rooms are approximate and should be regarded as such by any prospective tenant.

APPROXIMATE FLOOR AREA = 193 SQ FT / 17.9 SQ M  
INCLUDING LIMITED USE AREA (4 SQ FT / 0.4 SQ M)



Viewing by appointment only  
Maison Chase - Maison Chase  
41A Mill Lane, West Hampstead, London NW6 1NB  
Tel: 020 3951 7464  
Email: [home@maisonchase.co.uk](mailto:home@maisonchase.co.uk)  
Website: [www.maisonchase.co.uk](http://www.maisonchase.co.uk)

