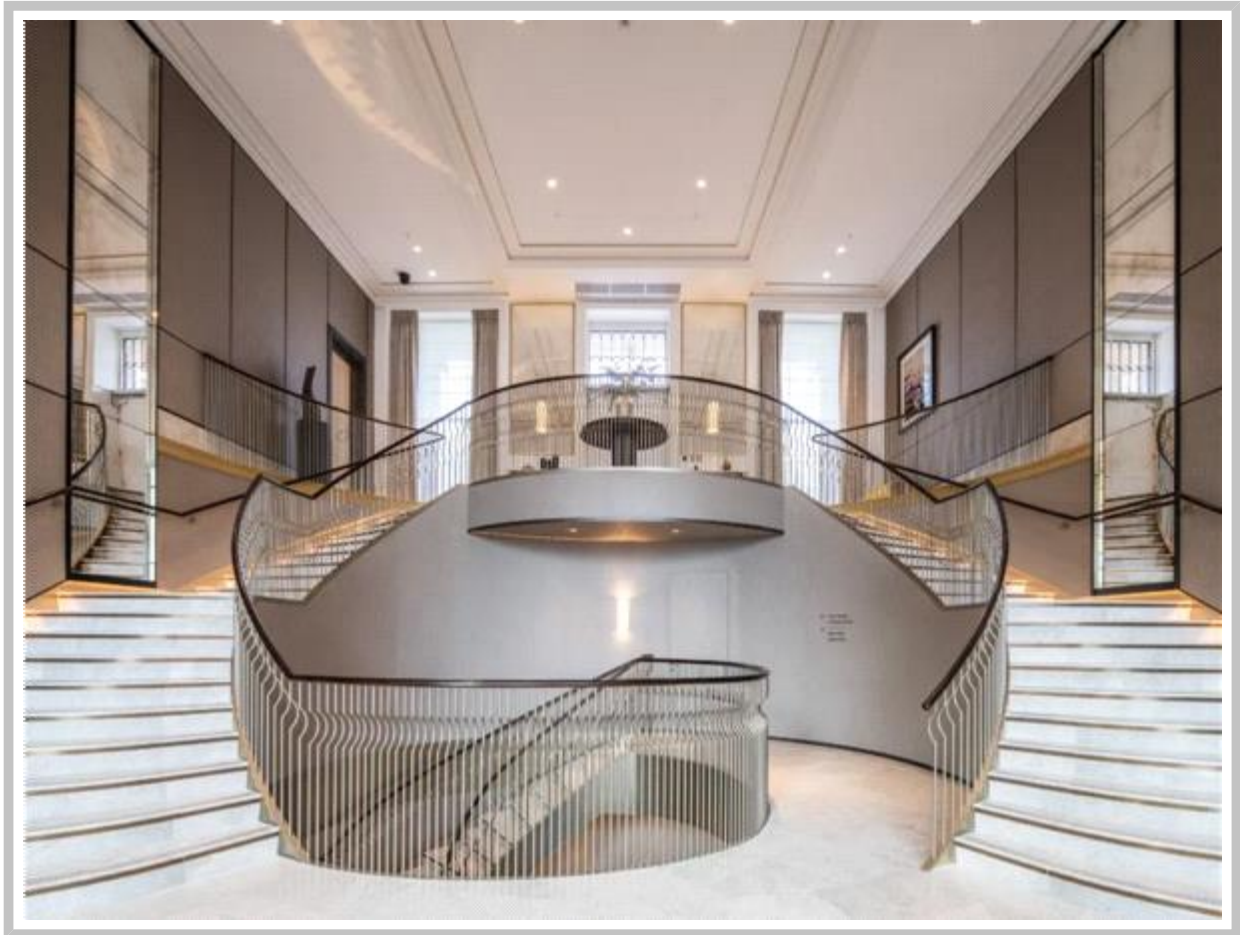




PARK CRESCENT, REGENTS PARK, LONDON W1B

£1,750 PW



ELEGANT LIVING HOME - REGENTS PARK - FITZROVIA
W1B

PROPERTY REFERENCE CODE: RL0578

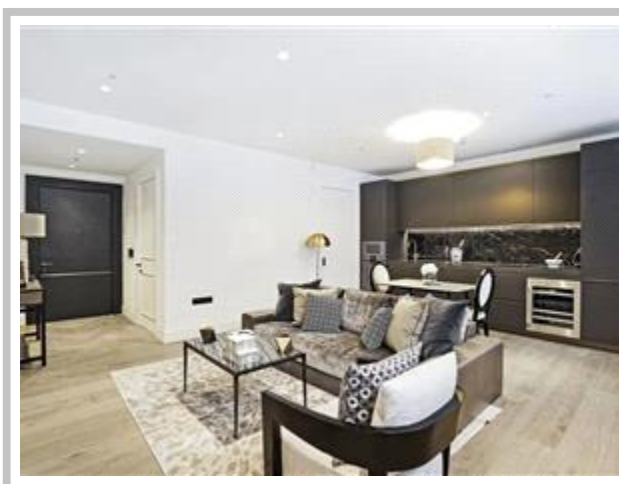
PARK CRESCENT, REGENTS PARK, LONDON W1B

This elegant 1 bedroom apartment on a long-awaited new development, has spectacular ceiling heights, a large reception room with an open-plan kitchen, wood or stone floors throughout, as well as air-cooling and underground parking, it has been stylishly yet neutrally furnished throughout.

- AN ELEGANT 1 BEDROOM APARTMENT
- QUALITY KITCHEN WITH GAGGENAU APPLIANCES
- 24 HOUR CONCIERGE-SECURITY
- RESIDENTS CINEMA, SPA & GYM
- VALET PARKING AVAILABLE BY SEPARATE NEGOTIATION
- LUXURIOUS REGENT'S CRESCENT DEVELOPMENT

This elegant 1 bedroom apartment on a long-awaited new development, has spectacular ceiling heights, a large reception room with an open-plan kitchen, wood or stone floors throughout, as well as air-cooling and underground parking, it has been stylishly yet neutrally furnished throughout to create a sophisticated and welcoming environment.

Regent's Crescent is a prestigious new development of 67 apartments set behind an elegant restored Grade I listed stucco facade designed by John Nash, moments from the open space of Regent's Park. Amenities include a magnificent double-height entrance lobby bathed in natural light with sweeping views over private gardens; and a 9,000 square foot basement spa and entertainment area comprising a 20-metre swimming pool, gym, sauna and steam room, private 12-seat cinema room and business suite. Residents benefit from access to the exclusive private gardens of Park Square (with tennis courts), as well as the gardens of Park Crescent.



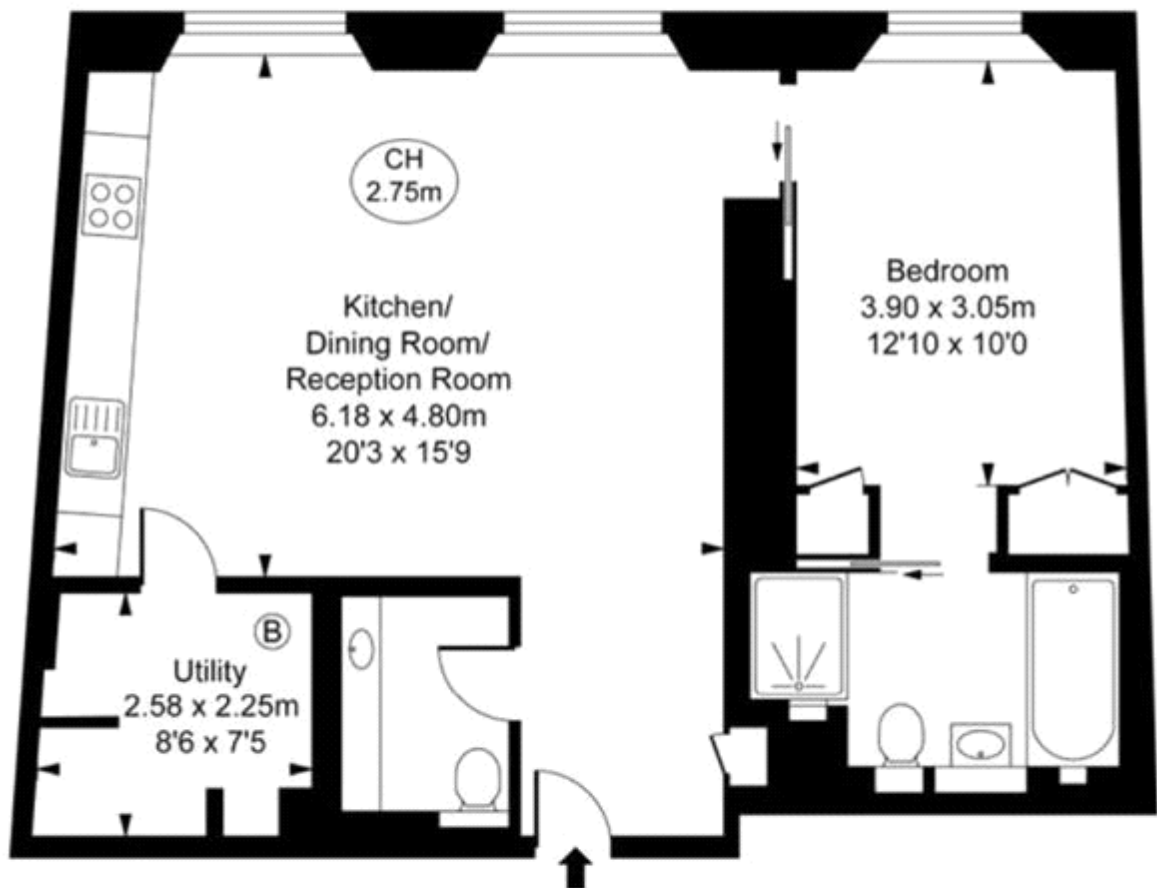




Whilst every effort is made to ensure the accuracy of these details, it should be noted that the measurements are approximate only. Floorplans are for representation purposes only and prepared according to the RICS Code of Measuring Practice by our floorplan provider. Therefore, the layout of doors, windows and rooms are approximate and should be regarded as such by any prospective tenant.



Park Crescent, W1B
Approximate Gross Internal Area
68.14 sq m / 733 sq ft
(CH = Ceiling Heights)



Lower Ground Floor

This plan is not to scale. It is for guidance and not for valuation purposes.
All measurements and areas are approximate only, and have been prepared in accordance with the current edition of the RICS Code of Measuring Practice.

Viewing by appointment only
Maison Chase - Maison Chase
41A Mill Lane, West Hampstead, London NW6 1NB
Tel: 020 3951 7464
Email: home@maisonchase.co.uk
Website: www.maisonchase.co.uk

