



**LOUDOUN ROAD, ST JOHNS WOOD, LONDON NW8**

**£4,950 PW**



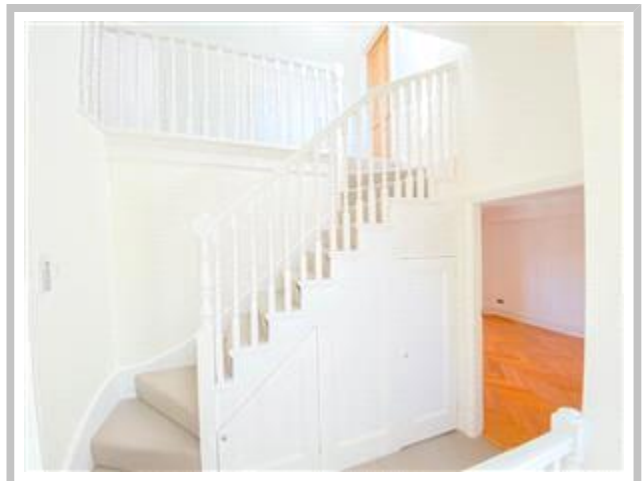
**YOUR HOME - ST JOHNS WOOD NW8**

**PROPERTY REFERENCE CODE: RL0323**

## LOUDOUN ROAD, ST JOHNS WOOD, LONDON NW8

Your new place, arranged over 3 floors with 3 en-suite bedrooms, a sought after location, stunning private garden, rare gated driveway for the area, your impressive detached home, offering clean and fresh interiors throughout and entertaining-inviting living space.

Your new place, arranged over 3 floors with 3 en-suite bedrooms, a sought after location, stunning private garden, rare gated driveway for the area, your impressive detached home, offering clean and fresh interiors throughout and entertaining-inviting living space.





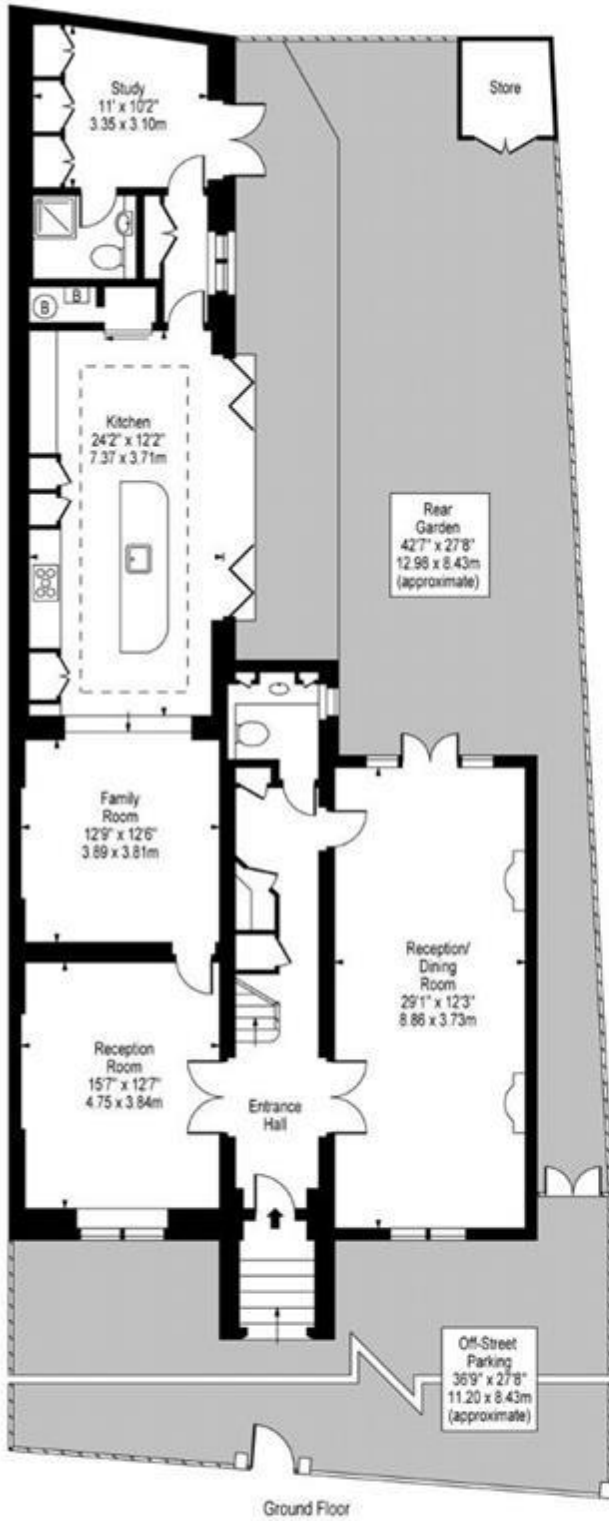


Energy Efficiency Rating		
	Current	Potential
<i>Very energy efficient - lower running costs</i>		
(92-100) <b>A</b>		
(81-91) <b>B</b>		
(69-80) <b>C</b>		<b>78</b>
(55-68) <b>D</b>		
(39-54) <b>E</b>	<b>49</b>	
(21-38) <b>F</b>		
(1-20) <b>G</b>		
<i>Not energy efficient - higher running costs</i>		
<b>England &amp; Wales</b>	EU Directive 2002/91/EC	

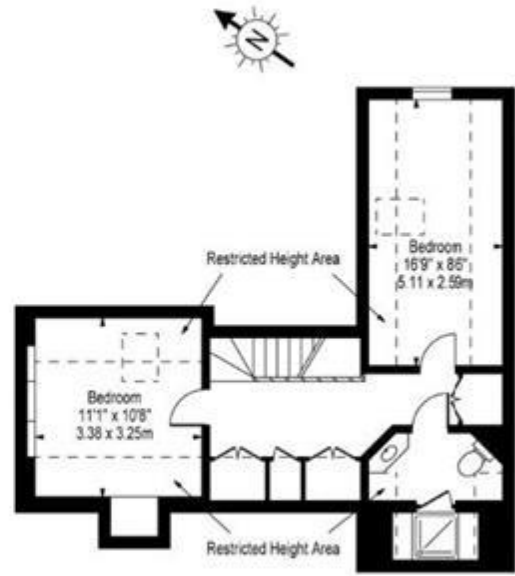
The energy efficiency rating is a measure of the overall efficiency of a home. The higher the rating the more energy efficient the home is and the lower the fuel bills will be.

Whilst every effort is made to ensure the accuracy of these details, it should be noted that the measurements are approximate only. Floorplans are for representation purposes only and prepared according to the RICS Code of Measuring Practice by our floorplan provider. Therefore, the layout of doors, windows and rooms are approximate and should be regarded as such by any prospective tenant.

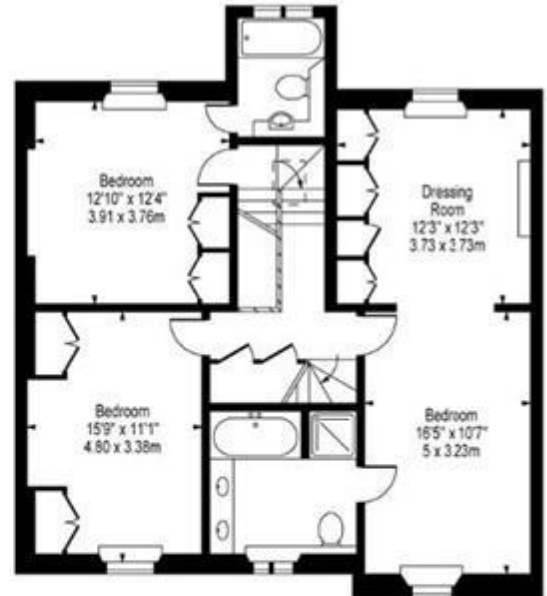
Loudoun Road, NW8 0LT



Ground Floor



Second Floor



First Floor

Approx Gross Internal Area 2890 Sq Ft - 268.48 Sq M

(Excluding Restricted Height Area)

(Excluding Store)

For Illustration Purposes Only - Not To Scale

Viewing by appointment only  
Maison Chace - Maison Chace  
41A Mill Lane, West Hampstead, London NW6 1NB  
Tel: 020 3951 7464  
Email: [info@maisonchase.co.uk](mailto:info@maisonchase.co.uk)  
Website: [www.maisonchase.co.uk](http://www.maisonchase.co.uk)

