



LATITUDE HOUSE, OVAL ROAD, REGENTS PARK NW1

£725 PW



YOUR NEW HOME - REGENTS PARK NW1

PROPERTY REFERENCE CODE: RL0114

LATITUDE HOUSE, OVAL ROAD, REGENTS PARK NW1

Designed to a great taste is this 2 double bed apartment, situated on the first floor of this superb complex of stylish apartments.

- A STUNNING 2 DOUBLE BEDROOM FLAT
- PRESENTED IN EXCELLENT CONDITION
- MASTER BEDROOM WITH AN EN SUITE BATHROOM
- SUPERB LOCATION MOMENTS FROM REGENT'S PARK
- SPACIOUS OPEN-PLAN RECEPTION ROOM/KITCHEN
- BALCONY OFF THE RECEPTION ROOM

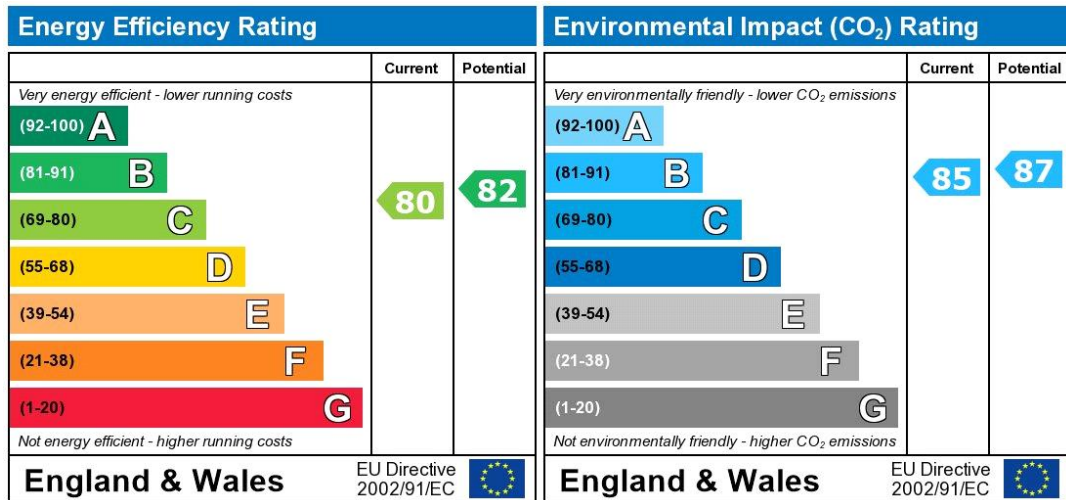
The property is offered in excellent condition with premium fixtures and finishes throughout, a generous open and airy living space and modern fully fitted kitchen.

Oval Road is set within the desirable locations of Regents Park and Primrose Hill and is walking distance into the heart of Camden Town.

Camden Town Underground station (Northern Line) and Camden Overground stations are both within walking distance as well as the shops, cafes, restaurants and amenities of Camden and Primrose Hill.





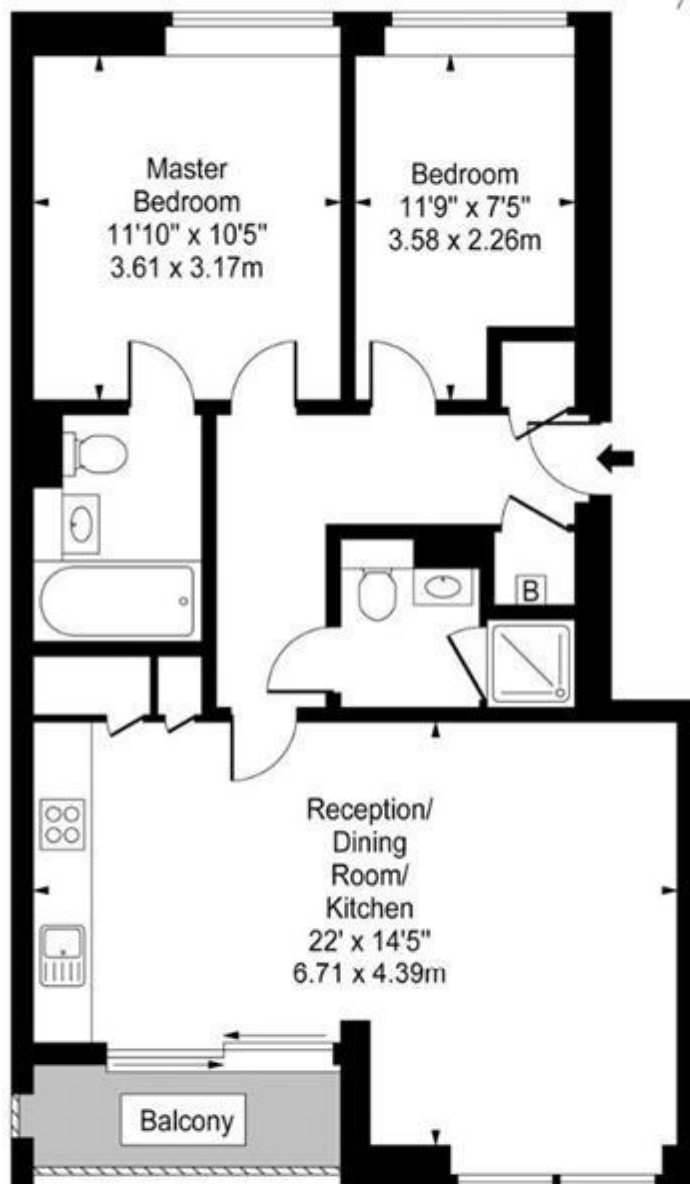


The energy efficiency rating is a measure of the overall efficiency of a home. The higher the rating the more energy efficient the home is and the lower the fuel bills will be.

The environmental impact rating is a measure of a home's impact on the environment in terms of carbon dioxide (CO₂)

Whilst every effort is made to ensure the accuracy of these details, it should be noted that the measurements are approximate only. Floorplans are for representation purposes only and prepared according to the RICS Code of Measuring Practice by our floorplan provider. Therefore, the layout of doors, windows and rooms are approximate and should be regarded as such by any prospective tenant.

Latitude House,
Oval Road,
Primrose Hill



First Floor

Gross Internal Area - 708 Sq Ft - 65.77 Sq M

Approx Gross Internal Area 708 Sq Ft - 65.77 Sq M

For Illustration Purposes Only - Not To Scale

Viewing by appointment only
Maison Chase - Maison Chase
41A Mill Lane, West Hampstead, London NW6 1NB
Tel: 020 3951 7464
Email: info@maisonchase.co.uk
Website: www.maisonchase.co.uk

