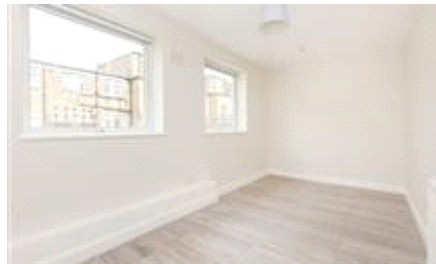




Maison Chase




Boston Place,  
Marylebone, London  
NW1  
£595 pw

Set within an attractive period property on a residential road, this amazing 2 bedroom flat offers well proportioned living space with modern interiors.

- Beautifully presented two bedroom apartment
- Smart open plan kitchen
- Private patio
- Envious location in Marylebone

# Energy Efficiency Rating

	Current	Potential
<i>Very energy efficient - lower running costs</i> (92-100) <b>A</b>		
(81-91) <b>B</b>		
(69-80) <b>C</b>	70	73
(55-68) <b>D</b>		
(39-54) <b>E</b>		
(21-38) <b>F</b>		
(1-20) <b>G</b>		
<i>Not energy efficient - higher running costs</i>		
<b>England &amp; Wales</b>	EU Directive 2002/91/EC	

The energy efficiency rating is a measure of the overall efficiency of a home. The higher the rating the more energy efficient the home is and the lower the fuel bills will be.

Viewing

Strictly by appointment with Maison Chase - Maison Chase Telephone  
020 3951 7464

Reference

RL0379

Additional Information

Whilst every effort is made to ensure the accuracy of these details, it should be noted that the measurements are approximate only. Floorplans are for representation purposes only and prepared according to the RICS Code of Measuring Practice by our floorplan provider. Therefore, the layout of doors, windows and rooms are approximate and should be regarded as such by any prospective tenant.