



Maison Chase

KENSINGTON CHURCH STREET, LONDON

£4,700 PW



**GORGEOUS STATE-OF-THE-ART 3 BEDROOM
PENTHOUSE IN KENSINGTON**

PROPERTY REFERENCE CODE: RL1290

KENSINGTON CHURCH STREET, LONDON

Stunning, high ceiling three bedroom, three bathroom penthouse. Kitchen worktops comprised of tuscan calacatta marble, hand-built kitchen units, state of the art Miele oven, induction hob and more, this beautiful apartment located in the heart of Kensington is a must see!

- STATE-OF-THE-ART THREE BEDROOM PENTHOUSE DUPLEX
- SITUATED ON THE THIRD FLOOR
- FULLY-FITTED AND HAND-BUILT MODERN KITCHEN
- TUSCAN CALACATTA MARBLE WORKTOPS
- INTEGRATED MIELE OVEN
- JULIET BALCONY OVERLOOKING HYDE PARK
- INDUCTION HOB
- 65" SAMSUNG SMART TELEVISIONS WITH APPLE TV IN RECEPTIONS
- 50" SAMSUNG SMART TELEVISIONS IN PRIMARY BEDROOMS
- 43" SAMSUNG TELEVISIONS IN SECOND BEDROOMS
- 32" AQUA VISION TELEVISIONS IN PRIMARY BATHROOMS
- 5.1 SURROUND-SOUND SONOS SYSTEM IN RECEPTIONS WITH SONOS SOUNDBAR TO ALL BEDROOM TELEVISIONS
- CRESTRON SMART TOUCHSCREEN CONTROLS OPERATING AV / MUSIC
- DALI LIGHTING
- PENTHOUSE DOOR CONTROLS
- HEATING/COMFORT COOLING SYSTEMS
- CCTV ACCESS

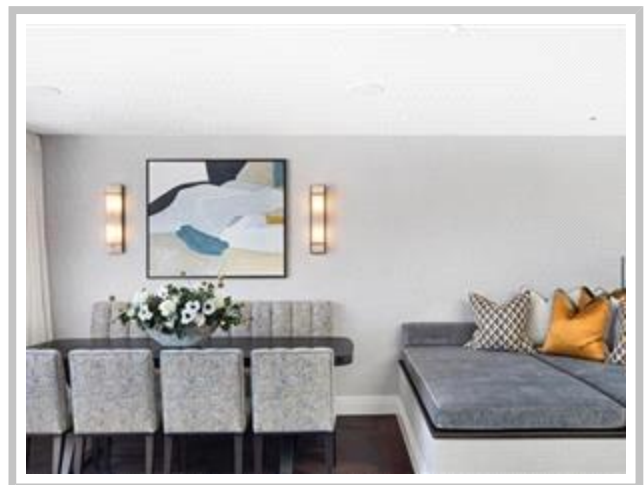
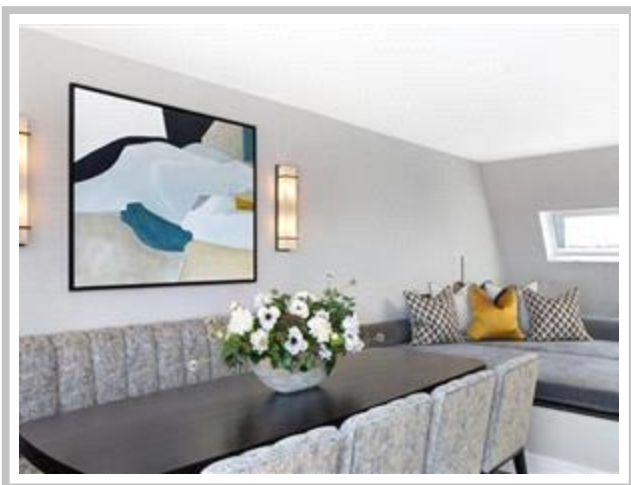
Stunning, high ceiling two bedroom, two bathroom penthouse. Kitchen worktops comprised of tuscan calacatta marble, hand-built kitchen units, state of the art Miele oven, induction hob and more, this beautiful apartment is located in the heart of Kensington and is situated on the third floor of the building.

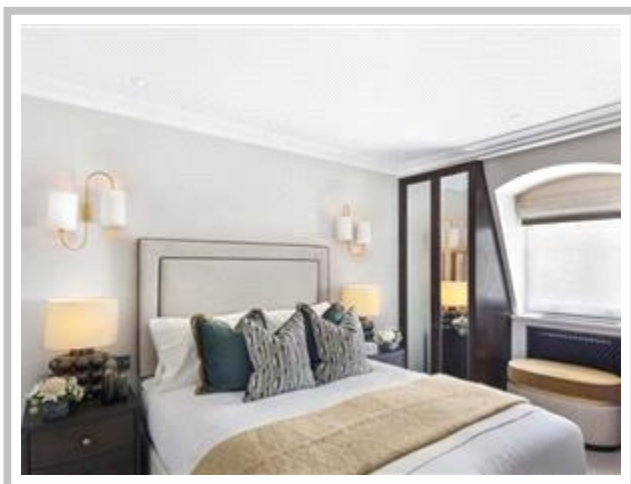
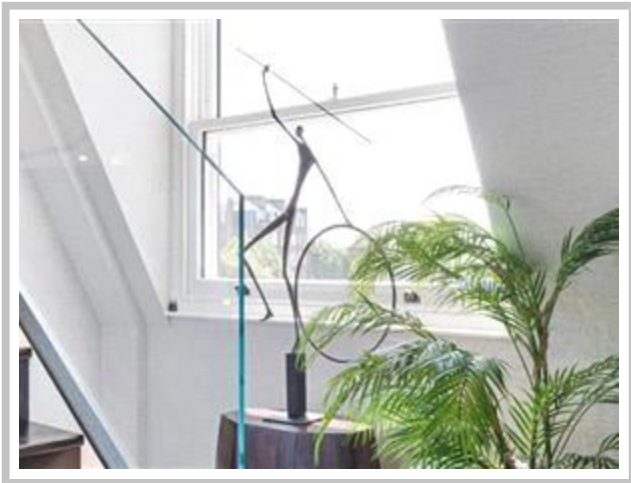
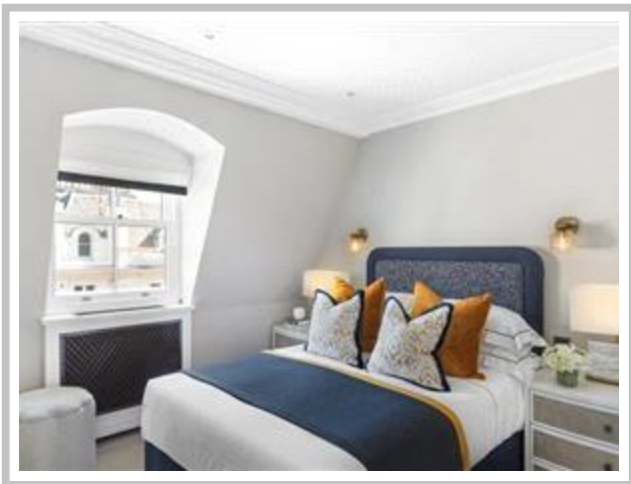
Each bedroom benefits from an ensuite bathroom with natural marble, bespoke vanity units, mirrored cabinets, a bathtub or walk-in shower, Aquavision TVs, Zuchetti Italian designer chrome ware with 200mm rainfall shower heads, Toto style Vitra V-care WC with automatic open/close seat lid.

The upper floor comprises a sleek fitted kitchen with Carrara quartz kitchen worktops and Cohiba marble surfaces, bespoke high-gloss veneered kitchens with Gaggenau and Miele appliances, and a bespoke breakfast bar and dining table accommodating up to 6.

Full-height Schuco sliding glazed doors leading to the roof terrace with an outdoor bio-fuel fire pit and 55" Samsung Terrace 4K QLED Outdoor Smart TV, perfect for hosting guests and warm weather entertaining.

Council Tax Band: C









Whilst every effort is made to ensure the accuracy of these details, it should be noted that the measurements are approximate only. Floorplans are for representation purposes only and prepared according to the RICS Code of Measuring Practice by our floorplan provider. Therefore, the layout of doors, windows and rooms are approximate and should be regarded as such by any prospective tenant.

Key :-

W - Wardrobe
JB - Juliette Balcony



FOURTH FLOOR



FIFTH FLOOR

APPROX. GROSS INTERNAL AREA *
1299 Ft² - 120.68 M²

Viewing by appointment only
Maison Chase - Maison Chase
41A Mill Lane, West Hampstead, London NW6 1NB
Tel: 020 3951 7464
Email: home@maisonchase.co.uk
Website: www.maisonchase.co.uk

