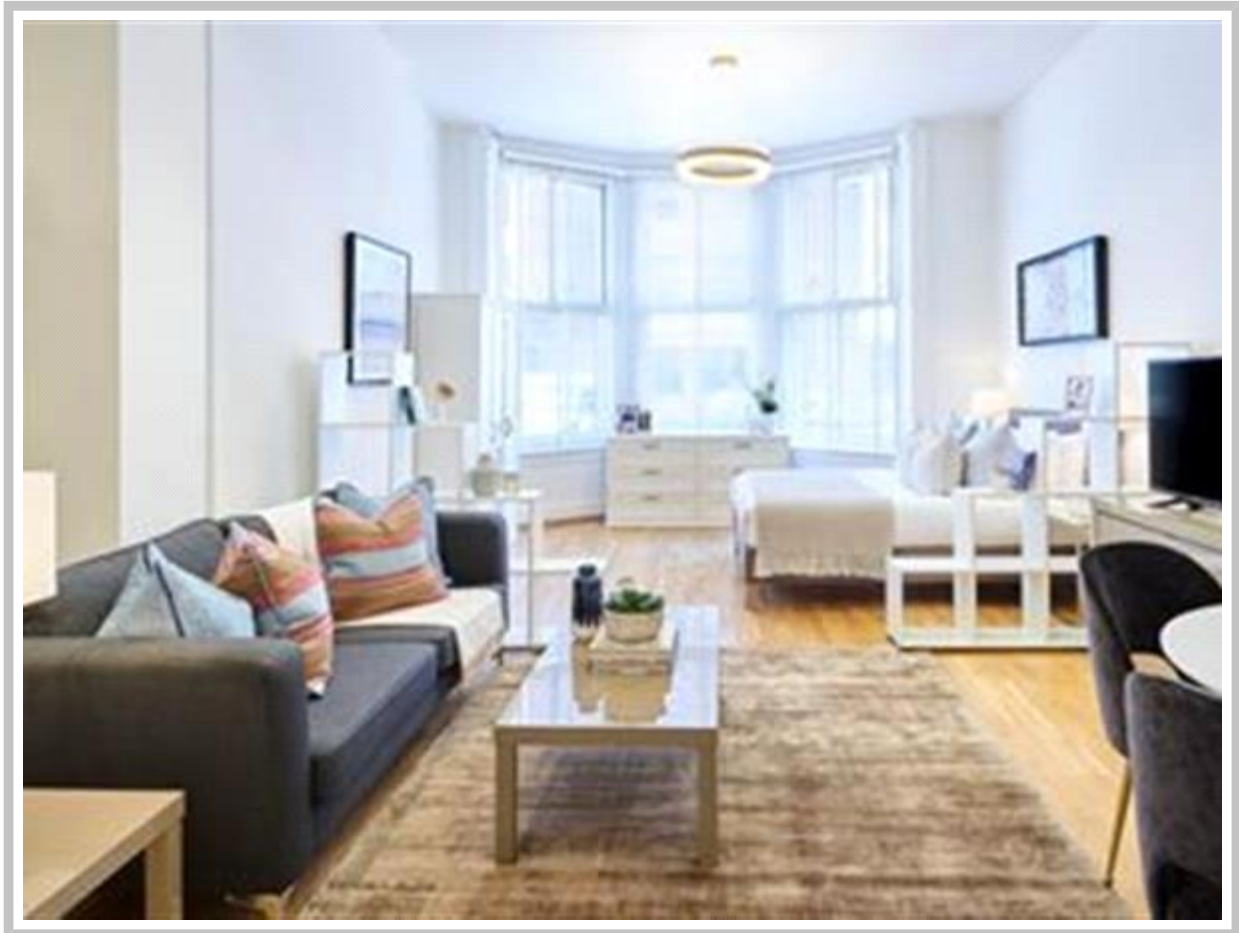




Maison Chase

CEDAR HOUSE, NOTTINGHAM PLACE, LONDON W1U

£1,000 PW



LOVELY 2 BEDROOM FLAT IN MARYLEBONE

PROPERTY REFERENCE CODE: RL1271

CEDAR HOUSE, NOTTINGHAM PLACE, LONDON W1U

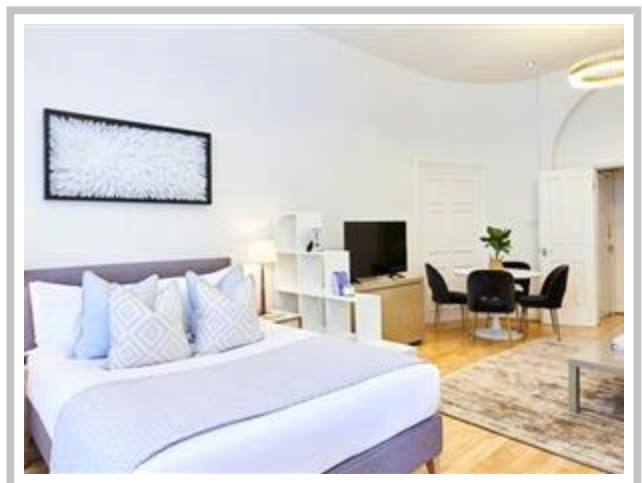
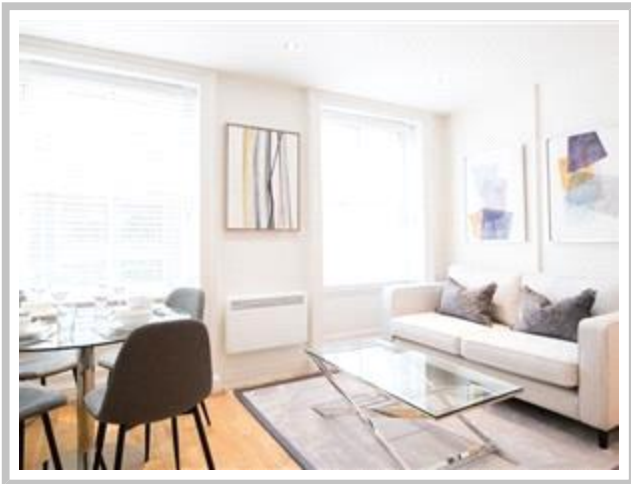
A gorgeous, newly-refurbished, third-floor three bedroom apartment in a red brick period building located in the heart of Marylebone.

- 2 BEDROOM FLAT LOCATED ON THE THIRD FLOOR
- ENVIABLE LOCATION IN MARYLEBONE
- MARYLBONE STATION A SHORT WALK AWAY
- 24-HOUR EMERGENCY & MAINTENANCE SERVICE
- ON-SITE BUILDING MANAGER

A gorgeous, newly-refurbished, third-floor three bedroom apartment in a red brick period building located in the heart of Marylebone.

Comprising a spacious reception room with wooden flooring, a fully-fitted modern kitchen, 1 ample bathroom and WC.

Council Tax Band: E





Whilst every effort is made to ensure the accuracy of these details, it should be noted that the measurements are approximate only. Floorplans are for representation purposes only and prepared according to the RICS Code of Measuring Practice by our floorplan provider. Therefore, the layout of doors, windows and rooms are approximate and should be regarded as such by any prospective tenant.



Viewing by appointment only
Maison Chase - Maison Chase
41A Mill Lane, West Hampstead, London NW6 1NB
Tel: 020 3951 7464
Email: home@maisonchase.co.uk
Website: www.maisonchase.co.uk

