



Maison Chase

**CARRINGTON HOUSE, HERTFORD STREET, MAYFAIR W1U**

**£1,275 PW**



**STUNNING 2 BED - MAYFAIR W1J**

**PROPERTY REFERENCE CODE: RL1255**

## **CARRINGTON HOUSE, HERTFORD STREET, MAYFAIR W1U**

A stunning two bedroom apartment within a 24h portered building, with lift access, in the most prestigious neighbourhood in Mayfair.

- 2 LUXURY BATHROOMS
- ELEGANT DECOR AND ATTRACTIVE WOOD FLOORS
- EXPERTLY FINISHED TO THE HIGHEST STANDARD
- FANTASTIC LOCATION
- FANTASTIC TWO DOUBLE BEDROOM APARTMENT
- LUXURY INTEGRATED KITCHEN
- HEART OF MAYFAIR
- CLOSE TO LOCAL SHOPS AND AMENITIES
- AVAILABLE IMMEDIATELY
- GREAT TRANSPORT LINKS


Maison Chase is glad to present this beautiful two bedroom, 2 bathroom apartment in the heart of the enviable location of Mayfair.

This property comprises a large open plan reception dining room and features bespoke furnishings and ultra modern fixtures and fittings throughout. The building has 24 Hour portage and lift access.

Hertford Street is situated moments from open spaces of Hyde Park, with a wealth of independent shops, boutiques and restaurants nearby, just a short walk away of Oxford Street and the West End.

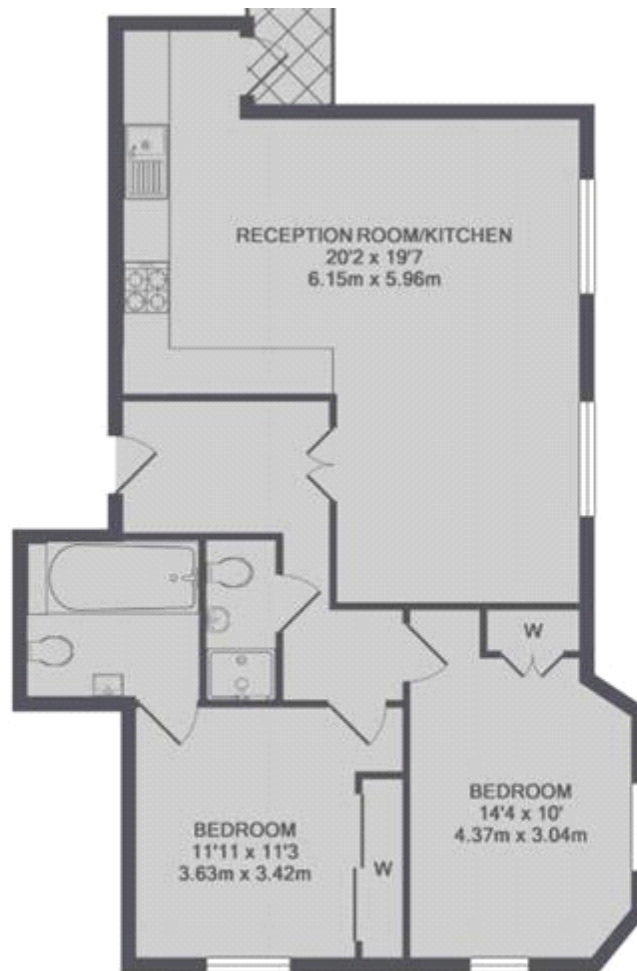




Energy Efficiency Rating		
	Current	Potential
<i>Very energy efficient - lower running costs</i>		
(92-100) <b>A</b>		
(81-91) <b>B</b>		
(69-80) <b>C</b>		79
(55-68) <b>D</b>	67	
(39-54) <b>E</b>		
(21-38) <b>F</b>		
(1-20) <b>G</b>		
<i>Not energy efficient - higher running costs</i>		
<b>England &amp; Wales</b>	EU Directive 2002/91/EC	

The energy efficiency rating is a measure of the overall efficiency of a home. The higher the rating the more energy efficient the home is and the lower the fuel bills will be.

Whilst every effort is made to ensure the accuracy of these details, it should be noted that the measurements are approximate only. Floorplans are for representation purposes only and prepared according to the RICS Code of Measuring Practice by our floorplan provider. Therefore, the layout of doors, windows and rooms are approximate and should be regarded as such by any prospective tenant.



TOTAL APPROX. FLOOR AREA 809 SQ.FT. (75.2 SQ.M.)

Viewing by appointment only  
Maison Chase - Maison Chase  
41A Mill Lane, West Hampstead, London NW6 1NB  
Tel: 020 3951 7464  
Email: [home@maisonchase.co.uk](mailto:home@maisonchase.co.uk)  
Website: [www.maisonchase.co.uk](http://www.maisonchase.co.uk)

