



Maison Chose

**NOTTINGHAM PLACE, LONDON W1U**

**£1,200 PW**



**A STUNNING 1 BEDROOM APARTMENT IN  
MARYLEBONE W1U**

**PROPERTY REFERENCE CODE: RL0298**

## **NOTTINGHAM PLACE, LONDON W1U**

This stunning and spacious one bedroom apartment is situated on the first floor of smart red brick period building in the heart of Marylebone. The luxuriously appointed flat benefits from a good size reception room with wooden flooring and high ceilings that opens onto full width balcony.

- WONDERFUL 1 BEDROOM FLAT ARRANGED ON THE 1ST FLOOR
- IMPOSING PERIOD BUILDING WITH A DESIRABLE LOCATION
- SPACIOUS RECEPTION ROOM WITH CONTEMPORARY INTERIORS
- OFFERS SLEEK KITCHEN WITH INTEGRATED APPLIANCES
- STYLISH BEDROOM WITH FITTED WARDROBES
- CENTRALLY LOCATED FOR SHOPS AND TRANSPORT

This stunning and spacious one bedroom apartment is situated on the first floor of smart red brick period building in the heart of Marylebone. The luxuriously appointed flat benefits from a good size reception room with wooden flooring and high ceilings that opens onto full width balcony. Additionally there is a fitted kitchen, a double bedroom with built in storage and a bathroom. Fashionable Marylebone High Street is located within a few minutes' walk. The nearest tube station is Baker Street Underground Station (approx 0.3 miles) served by Bakerloo, Jubilee, Hammersmith & City, Circle and Metropolitan Lines.

Council Tax Band: G



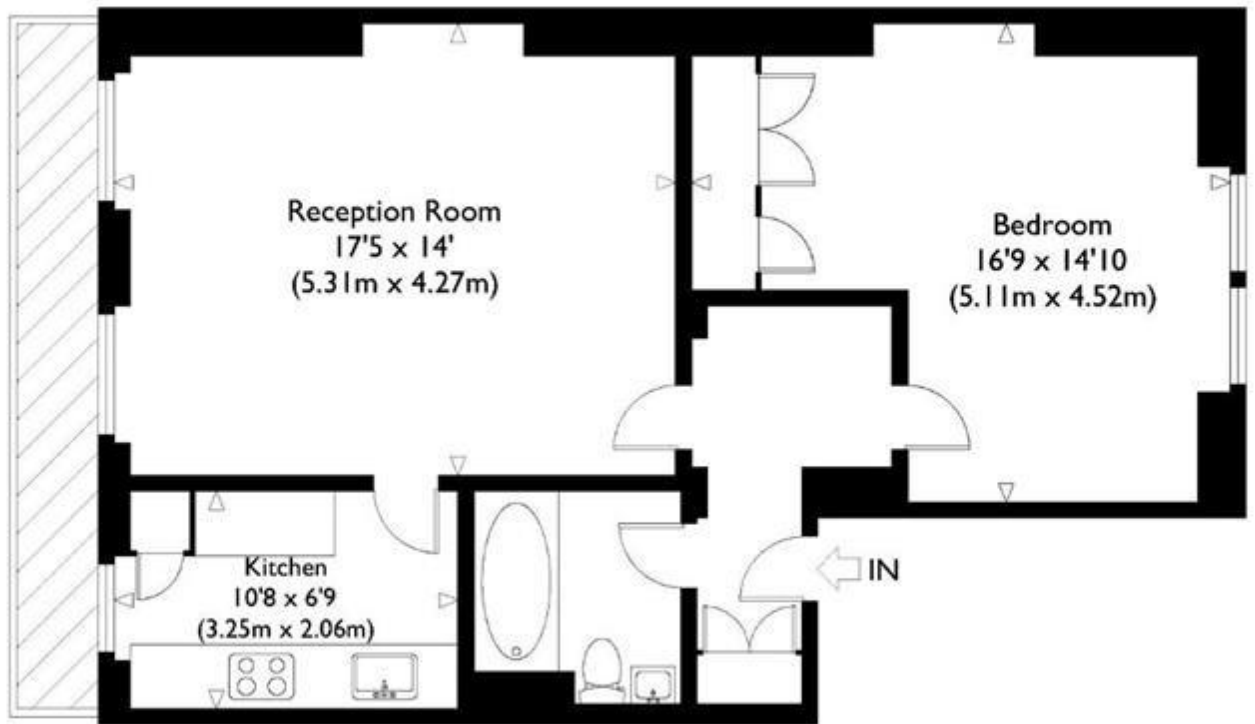




Whilst every effort is made to ensure the accuracy of these details, it should be noted that the measurements are approximate only. Floorplans are for representation purposes only and prepared according to the RICS Code of Measuring Practice by our floorplan provider. Therefore, the layout of doors, windows and rooms are approximate and should be regarded as such by any prospective tenant.

# Nottingham Place, W1

Approximate Gross Internal Floor Area : 610 sq ft / 56.7 sq m



First Floor

Viewing by appointment only  
Maison Chase - Maison Chase  
41A Mill Lane, West Hampstead, London NW6 1NB  
Tel: 020 3951 7464  
Email: [home@maisonchase.co.uk](mailto:home@maisonchase.co.uk)  
Website: [www.maisonchase.co.uk](http://www.maisonchase.co.uk)

