



Maison Chase

FINCHLEY ROAD, ST JOHNS WOOD, LONDON NW8

£2,145 PCM



**A SIZEABLE 1 BEDROOM APARTMENT - ST JOHNS
WOOD NW8**

PROPERTY REFERENCE CODE: RL0617

FINCHLEY ROAD, ST JOHNS WOOD, LONDON NW8


Located near Regent's Park and moments from the fashionable St John's Wood High Street, this superb 1 bedroom apartment is set on the 1st floor and offers sizeable living and entertaining space as well as a large study/storage room.

- ONE BEDROOM FLAT WITHIN AN ATTRACTIVE PERIOD CONVERSION
- BRIGHT AND AIRY RECEPTION ROOM
- IMMACULATE FULLY FITTED KITCHEN
- FINISHED BEAUTIFULLY THROUGHOUT
- CENTRALLY LOCATED FOR SHOPS AND TRANSPORT

Located near Regent's Park and moments from the fashionable St John's Wood High Street, this superb 1 bedroom apartment is set on the 1st floor and offers sizeable living and entertaining space as well as a large study/storage room.





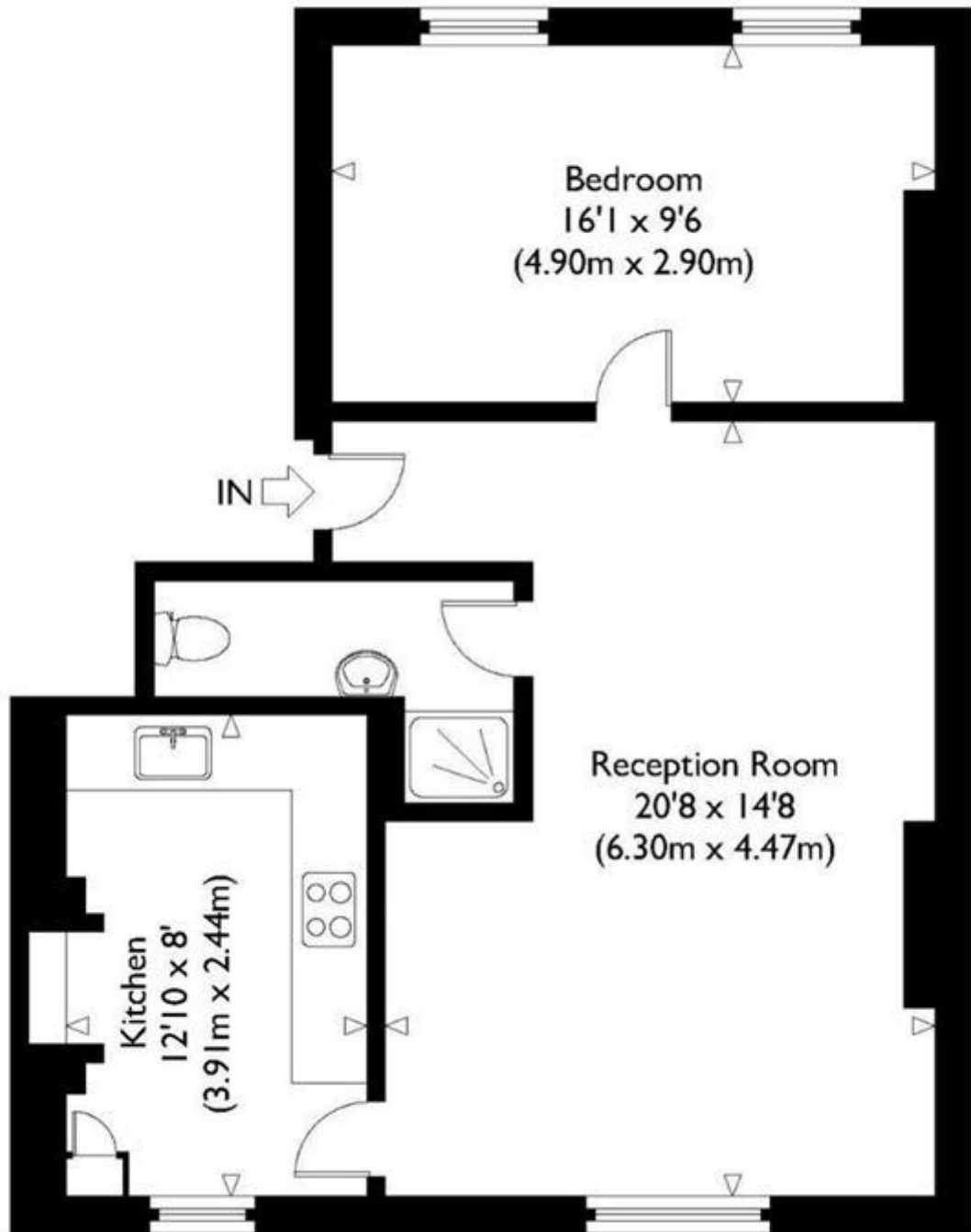
Energy Efficiency Rating		
	Current	Potential
<i>Very energy efficient - lower running costs</i>		
(92-100) A		
(81-91) B		83
(69-80) C		
(55-68) D		
(39-54) E	48	
(21-38) F		
(1-20) G		
<i>Not energy efficient - higher running costs</i>		
England & Wales	EU Directive 2002/91/EC	

The energy efficiency rating is a measure of the overall efficiency of a home. The higher the rating the more energy efficient the home is and the lower the fuel bills will be.

Whilst every effort is made to ensure the accuracy of these details, it should be noted that the measurements are approximate only. Floorplans are for representation purposes only and prepared according to the RICS Code of Measuring Practice by our floorplan provider. Therefore, the layout of doors, windows and rooms are approximate and should be regarded as such by any prospective tenant.

Finchley Road

First Floor



Approximate Gross Internal Floor Area : 601 sq ft / 55.8 sq m

Illustration for identification purposes only, measurements are approximate, not to scale.

Viewing by appointment only
Maison Chase - Maison Chase
41A Mill Lane, West Hampstead, London NW6 1NB
Tel: 020 3951 7464
Email: home@maisonchase.co.uk
Website: www.maisonchase.co.uk

